

## Product datasheet for **TA382112**

### Dppa3 Rabbit Polyclonal Antibody

#### Product data:

Product Type:	Primary Antibodies
Applications:	WB
Recommended Dilution:	WB,1:1000 - 1:2000
Reactivity:	Mouse, Rat
Modifications:	Unmodified
Host:	Rabbit
Isotype:	IgG
Clonality:	Polyclonal
Immunogen:	Recombinant protein of human Stella.
Formulation:	Buffer: PBS with 0.02% sodium azide,50% glycerol,pH7.3.
Concentration:	lot specific
Purification:	Affinity purification
Conjugation:	Unconjugated
Storage:	Store at -20°C. Avoid freeze / thaw cycles.
Stability:	Shelf life: one year from despatch.
Predicted Protein Size:	18kDa
Gene Name:	developmental pluripotency-associated 3
Database Link:	<a href="#">Entrez Gene 73708 Mouse Q8QZY3</a>



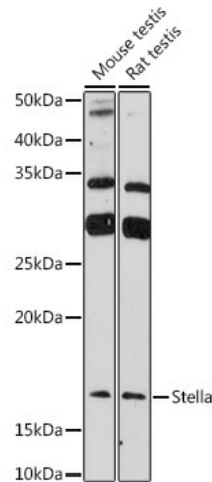
[View online »](#)

**Background:**

Primordial germ cell (PGCs)-specific protein involved in epigenetic chromatin reprogramming in the zygote following fertilization. In zygotes, DNA demethylation occurs selectively in the paternal pronucleus before the first cell division, while the adjacent maternal pronucleus and certain paternally-imprinted loci are protected from this process. Participates in protection of DNA methylation in the maternal pronucleus by preventing conversion of 5mC to 5hmC: specifically recognizes and binds histone H3 dimethylated at 'Lys-9' (H3K9me2 on maternal genome, and protects maternal genome from TET3-mediated conversion to 5hmC and subsequent DNA demethylation. Does not bind paternal chromatin, which is mainly packed into protamine and does not contain much H3K9me2 mark. Also protects imprinted loci that are marked with H3K9me2 in mature sperm from DNA demethylation in early embryogenesis. May be important for the totipotent/pluripotent states continuing through preimplantation development. Also involved in chromatin condensation in oocytogenesis.

**Synonyms:**

Stella; STELLAR

**Product images:**

Western blot analysis of extracts of various cell lines, using Stella antibody (TA382112) at 1:1000 dilution. | Secondary antibody: HRP Goat Anti-Rabbit IgG (H+L) at 1:10000 dilution. | Lysates/proteins: 25ug per lane. | Blocking buffer: 3% nonfat dry milk in TBST. | Detection: ECL Enhanced Kit. | Exposure time: 180s.