

Product datasheet for **TA382078S**

STAMBPL1 Rabbit Polyclonal Antibody

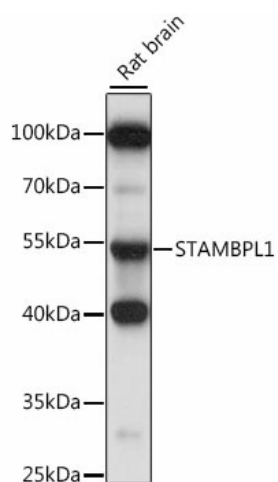
Product data:

Product Type:	Primary Antibodies
Applications:	ELISA, WB
Recommended Dilution:	WB, 1:500 - 1:2000 ELISA, Recommended starting concentration is 1 µg/mL. Please optimize the concentration based on your specific assay requirements.
Reactivity:	Mouse, Rat
Modifications:	Unmodified
Host:	Rabbit
Isotype:	IgG
Clonality:	Polyclonal
Formulation:	Buffer: PBS with 0.02% sodium azide, 50% glycerol, pH 7.3.
Concentration:	lot specific
Purification:	Affinity purification
Conjugation:	Unconjugated
Storage:	Store at -20°C. Avoid freeze / thaw cycles.
Stability:	Shelf life: one year from despatch.
Predicted Protein Size:	50kDa
Gene Name:	STAM binding protein like 1
Database Link:	Q96FJ0
Background:	Predicted to enable Lys63-specific deubiquitinase activity and thiol-dependent deubiquitinase. Predicted to be involved in protein K63-linked deubiquitination. Located in membrane.
Synonyms:	ALMalpha; AMSH-FP; AMSH-LP; AMSHLP; bA399O19.2; FLJ31524; KIAA1373; OTTHUMP00000020055



[View online »](#)

Product images:



Western blot analysis of lysates from rat brain