

## Product datasheet for **TA382065**

### ST6GALNAC2 Rabbit Polyclonal Antibody

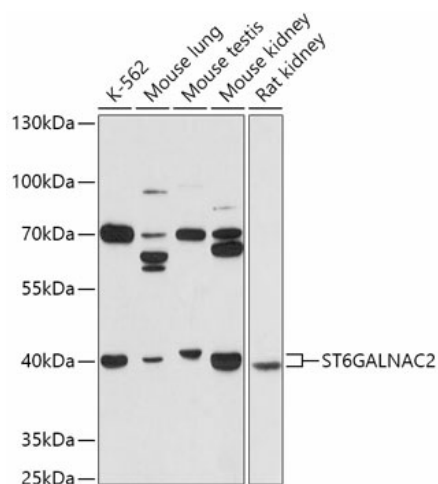
#### Product data:

|                       |  |
|-----------------------|--|
| Product Type:         | Primary Antibodies   |
| Applications:         | WB   |
| Recommended Dilution: | WB,1:500 - 1:2000  |
| Reactivity:           | Human, Mouse, Rat  |
| Modifications:        | Unmodified   |
| Host:                 | Rabbit   |
| Isotype:              | IgG  |
| Clonality:            | Polyclonal   |
| Immunogen:            | Recombinant fusion protein containing a sequence corresponding to amino acids 30-200 of human ST6GALNAC2 (NP_006447.2).  |
| Formulation:          | Buffer: PBS with 0.02% sodium azide,50% glycerol,pH7.3.  |
| Concentration:        | lot specific   |
| Purification:         | Affinity purification  |
| Conjugation:          | Unconjugated   |
| Storage:              | Store at -20°C. Avoid freeze / thaw cycles.  |
| Stability:            | Shelf life: one year from despatch.  |
| Gene Name:            | ST6 N-acetylgalactosaminide alpha-2,6-sialyltransferase 2  |
| Database Link:        | <a href="#">Entrez Gene 10610 Human Q9UJ37</a>   |
| Background:           | ST6GALNAC2 belongs to a family of sialyltransferases that add sialic acids to the nonreducing ends of glycoconjugates. At the cell surface, these modifications have roles in cell-cell and cell-substrate interactions, bacterial adhesion, and protein targeting (Samyn-Petit et al., 2000 [PubMed 10742600]).[supplied by OMIM, Mar 2008] |
| Synonyms:             | (alpha-N-acetylneuraminyl-2,3-beta-galactosyl-1,3); FLJ45660; SAIL1; SIAT7; SIAT7B; SIATL1; ST6GalNAII; STHM   |



[View online »](#)

## Product images:



Western blot analysis of extracts of various cell lines, using ST6GALNAC2 antibody (TA382065) at 1:1000 dilution. | Secondary antibody: HRP Goat Anti-Rabbit IgG (H+L) at 1:10000 dilution. | Lysates/proteins: 25ug per lane. | Blocking buffer: 3% nonfat dry milk in TBST. | Detection: ECL Basic Kit. | Exposure time: 90s.