

## Product datasheet for **TA382058**

### SIAT4A (ST3GAL1) Rabbit Polyclonal Antibody

#### Product data:

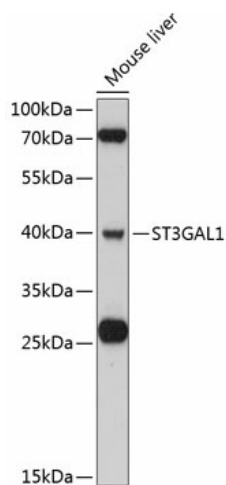
Product Type:	Primary Antibodies
Applications:	WB
Recommended Dilution:	WB,1:500 - 1:2000
Reactivity:	Mouse
Modifications:	Unmodified
Host:	Rabbit
Isotype:	IgG
Clonality:	Polyclonal
Immunogen:	Recombinant fusion protein containing a sequence corresponding to amino acids 35-135 of human ST3GAL1 (NP_003024.1).
Formulation:	Buffer: PBS with 0.02% sodium azide,50% glycerol,pH7.3.
Concentration:	lot specific
Purification:	Affinity purification
Conjugation:	Unconjugated
Storage:	Store at -20°C. Avoid freeze / thaw cycles.
Stability:	Shelf life: one year from despatch.
Predicted Protein Size:	39kDa
Gene Name:	ST3 beta-galactoside alpha-2,3-sialyltransferase 1
Database Link:	<a href="#">Q11201</a>
Background:	The protein encoded by this gene is a type II membrane protein that catalyzes the transfer of sialic acid from CMP-sialic acid to galactose-containing substrates. The encoded protein is normally found in the Golgi but can be proteolytically processed to a soluble form. Correct glycosylation of the encoded protein may be critical to its sialyltransferase activity. This protein, which is a member of glycosyltransferase family 29, can use the same acceptor substrates as does sialyltransferase 4B. Two transcript variants encoding the same protein have been found for this gene. Other transcript variants may exist, but have not been fully characterized yet.



[View online »](#)

**Synonyms:**

CMP-N-acetylneuraminate-beta-galactosamide-alpha-2; DKFZp666E036; DKFZp779K2051; FLJ36548; Gal-beta-1,3-GalNAc-alpha-2,3-sialyltransferase; Gal-NAc6S; MGC9183; SIAT4; SIAT4-A; SIAT4A; SIATFL; ST3GalA; ST3GalA.1; ST3GalIA; ST3GalIA,1; ST3O

**Product images:**

Western blot analysis of extracts of mouse liver, using ST3GAL1 antibody (TA382058) at 1:3000 dilution. | Secondary antibody: HRP Goat Anti-Rabbit IgG (H+L) at 1:10000 dilution. | Lysates/proteins: 25ug per lane. | Blocking buffer: 3% nonfat dry milk in TBST. | Detection: ECL Basic Kit . | Exposure time: 40s.