

Product datasheet for **TA382054**

SSX5 Rabbit Polyclonal Antibody

Product data:

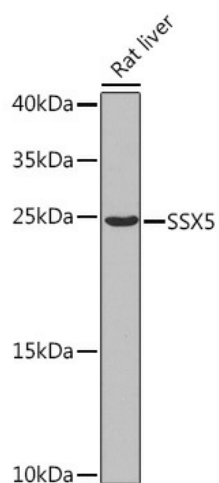
Product Type:	Primary Antibodies
Applications:	WB
Recommended Dilution:	WB,1:500 - 1:2000
Reactivity:	Human, Mouse, Rat
Modifications:	Unmodified
Host:	Rabbit
Isotype:	IgG
Clonality:	Polyclonal
Immunogen:	Recombinant fusion protein containing a sequence corresponding to amino acids 1-229 of human SSX5 (NP_066295.3).
Formulation:	Buffer: PBS with 0.02% sodium azide,50% glycerol,pH7.3.
Concentration:	lot specific
Purification:	Affinity purification
Conjugation:	Unconjugated
Storage:	Store at -20°C. Avoid freeze / thaw cycles.
Stability:	Shelf life: one year from despatch.
Predicted Protein Size:	21kDa/26kDa
Gene Name:	SSX family member 5
Database Link:	Entrez Gene 6758 Human O60225
Background:	The product of this gene belongs to the family of highly homologous synovial sarcoma X (SSX) breakpoint proteins. These proteins may function as transcriptional repressors. They are also capable of eliciting spontaneous humoral and cellular immune responses in cancer patients, and are potentially useful targets in cancer vaccine-based immunotherapy. While some of the related SSX genes are involved in t(X;18)(p11.2;q11.2) translocations that are characteristically found in all synovial sarcomas, this gene does not appear to be involved in such translocations. Two transcript variants encoding distinct isoforms have been identified for this gene.



[View online »](#)

Synonyms: MGC9494; OTTHUMP00000023240

Product images:



Western blot analysis of extracts of Rat liver, using SSX5 Rabbit pAb (TA382054) at 1:1000 dilution. | Secondary antibody: HRP Goat Anti-Rabbit IgG (H+L) at 1:10000 dilution. | Lysates/proteins: 25ug per lane. | Blocking buffer: 3% nonfat dry milk in TBST. | Detection: ECL Basic Kit . | Exposure time: 90s.