

Product datasheet for **TA382046S**

Somatostatin Receptor 2 (SSTR2) Rabbit Polyclonal Antibody

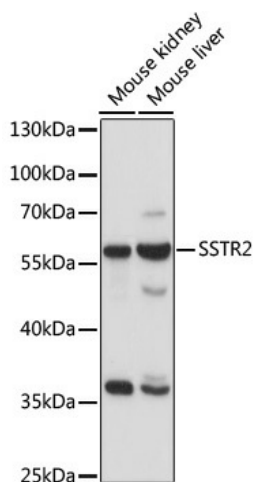
Product data:

| | |
|-------------------------|--|
| Product Type: | Primary Antibodies |
| Applications: | ICC/IF, WB |
| Recommended Dilution: | WB,1:500 - 1:2000 IF,1:50 - 1:100 |
| Reactivity: | Human, Mouse, Rat |
| Modifications: | Unmodified |
| Host: | Rabbit |
| Isotype: | IgG |
| Clonality: | Polyclonal |
| Immunogen: | A synthetic peptide corresponding to a sequence within amino acids 300 to the C-terminus of human SSTR2 (NP_001041.1). |
| Formulation: | Buffer: PBS with 0.02% sodium azide,50% glycerol,pH7.3. |
| Concentration: | lot specific |
| Purification: | Affinity purification |
| Conjugation: | Unconjugated |
| Storage: | Store at -20°C. Avoid freeze / thaw cycles. |
| Stability: | Shelf life: one year from despatch. |
| Predicted Protein Size: | 40kDa/41kDa |
| Gene Name: | somatostatin receptor 2 |
| Database Link: | Entrez Gene 6752 Human P30874 |
| Background: | Somatostatin acts at many sites to inhibit the release of many hormones and other secretory proteins. The biologic effects of somatostatin are probably mediated by a family of G protein-coupled receptors that are expressed in a tissue-specific manner. SSTR2 is a member of the superfamily of receptors having seven transmembrane segments and is expressed in highest levels in cerebrum and kidney. |
| Synonyms: | SRIF-1; SS2R |

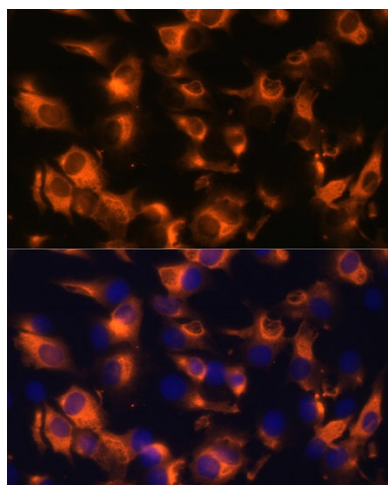


[View online »](#)

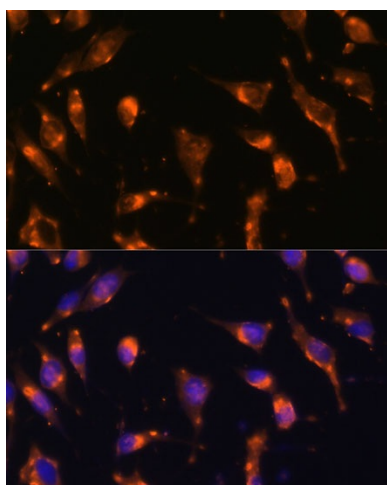
Product images:



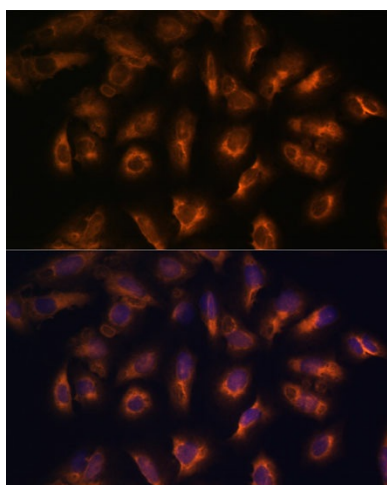
Western blot analysis of extracts of various cell lines, using SSTR2 antibody ([TA382046]) at 1:1000 dilution. | Secondary antibody: HRP Goat Anti-Rabbit IgG (H+L) at 1:10000 dilution. | Lysates/proteins: 25ug per lane. | Blocking buffer: 3% nonfat dry milk in TBST. | Detection: ECL Enhanced Kit . | Exposure time: 30s.



Immunofluorescence analysis of C6 cells using SSTR2 Polyclonal Antibody ([TA382046]) at dilution of 1:100 (40x lens). Blue: DAPI for nuclear staining.



Immunofluorescence analysis of L929 cells using SSTR2 Polyclonal Antibody ([TA382046]) at dilution of 1:100 (40x lens). Blue: DAPI for nuclear staining.



Immunofluorescence analysis of U-2 OS cells using SSTR2 Polyclonal Antibody ([TA382046]) at dilution of 1:100 (40x lens). Blue: DAPI for nuclear staining.