

## Product datasheet for **TA382036S**

### SSPN Rabbit Polyclonal Antibody

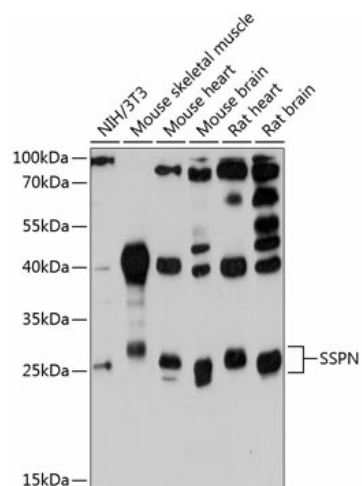
#### Product data:

Product Type:	Primary Antibodies
Applications:	WB
Recommended Dilution:	WB,1:500 - 1:2000
Reactivity:	Human, Mouse, Rat
Modifications:	Unmodified
Host:	Rabbit
Isotype:	IgG
Clonality:	Polyclonal
Immunogen:	Recombinant fusion protein containing a sequence corresponding to amino acids 1-60 of human SSPN (NP_005077.2).
Formulation:	Buffer: PBS with 0.02% sodium azide,50% glycerol,pH7.3.
Concentration:	lot specific
Purification:	Affinity purification
Conjugation:	Unconjugated
Storage:	Store at -20°C. Avoid freeze / thaw cycles.
Stability:	Shelf life: one year from despatch.
Predicted Protein Size:	14kDa/15kDa/26kDa
Gene Name:	sarcospan
Database Link:	<a href="#">Entrez Gene 8082 Human Q14714</a>
Background:	This gene encodes a member of the dystrophin-glycoprotein complex (DGC). The DGC spans the sarcolemma and is comprised of dystrophin, syntrophin, alpha- and beta-dystroglycans and sarcoglycans. The DGC provides a structural link between the subsarcolemmal cytoskeleton and the extracellular matrix of muscle cells. Two alternatively spliced transcript variants that encode different protein isoforms have been described.
Synonyms:	DAGA5; Krag; microspan; nanospan; NSPN; sarcospan; SPN1; SPN2



[View online »](#)

## Product images:



Western blot analysis of extracts of various cell lines, using SSPN antibody ([TA382036]) at 1:3000 dilution. | Secondary antibody: HRP Goat Anti-Rabbit IgG (H+L) at 1:10000 dilution. | Lysates/proteins: 25ug per lane. | Blocking buffer: 3% nonfat dry milk in TBST. | Detection: ECL Basic Kit . | Exposure time: 90s.