

Product datasheet for **TA382030**

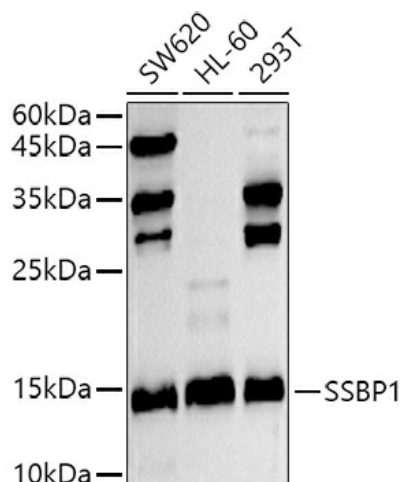
SSBP1 Rabbit Polyclonal Antibody

Product data:

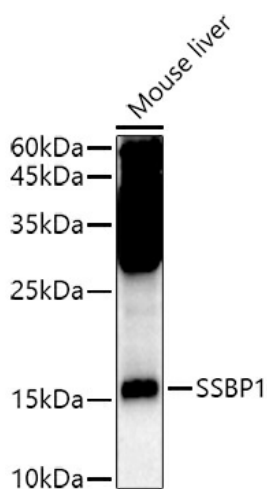
Product Type:	Primary Antibodies
Applications:	ICC/IF, IP, WB
Recommended Dilution:	WB,1:500 - 1:2000 IF,1:50 - 1:100 IP,1:50 - 1:200
Reactivity:	Human, Mouse
Modifications:	Unmodified
Host:	Rabbit
Isotype:	IgG
Clonality:	Polyclonal
Immunogen:	Recombinant fusion protein containing a sequence corresponding to amino acids 1-148 of human SSBP1 (NP_001243442.1).
Formulation:	Buffer: PBS with 0.02% sodium azide,50% glycerol,pH7.3.
Concentration:	lot specific
Purification:	Affinity purification
Conjugation:	Unconjugated
Storage:	Store at -20°C. Avoid freeze / thaw cycles.
Stability:	Shelf life: one year from despatch.
Predicted Protein Size:	17kDa
Gene Name:	single stranded DNA binding protein 1
Database Link:	Entrez Gene 6742 Human Q04837
Background:	SSBP1 is a housekeeping gene involved in mitochondrial biogenesis (Tiranti et al., 1995 [PubMed 7789991]). It is also a subunit of a single-stranded DNA (ssDNA)-binding complex involved in the maintenance of genome stability (Huang et al., 2009) [PubMed 19683501]. [supplied by OMIM, Feb 2010]
Synonyms:	Mt-SSB; MtSSB; SOSS-B1; SSBP



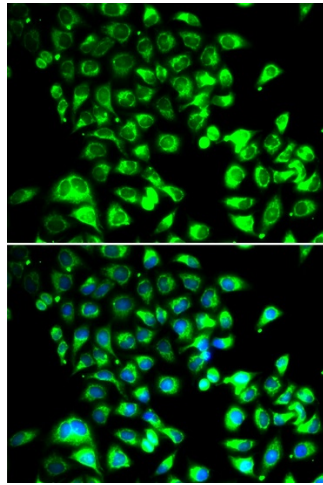
[View online »](#)

Product images:


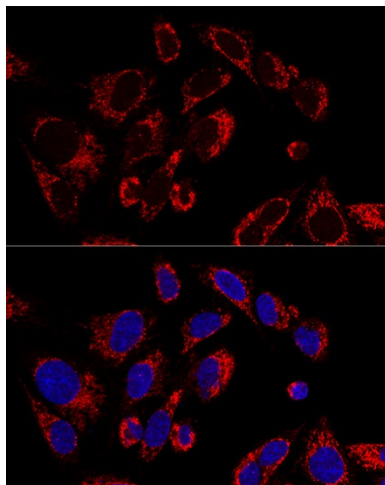
Western blot analysis of extracts of various cell lines, using SSBP1 antibody (TA382030) at 1:500 dilution. | Secondary antibody: HRP Goat Anti-Rabbit IgG (H+L) at 1:10000 dilution. | Lysates/proteins: 25ug per lane. | Blocking buffer: 3% nonfat dry milk in TBST. | Detection: ECL Basic Kit . | Exposure time: 30s.



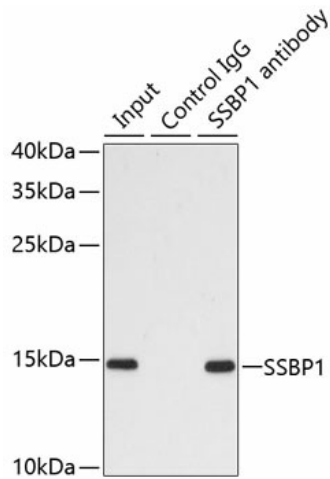
Western blot analysis of extracts of Mouse liver, using SSBP1 antibody (TA382030) at 1:500 dilution. | Secondary antibody: HRP Goat Anti-Rabbit IgG (H+L) at 1:10000 dilution. | Lysates/proteins: 25ug per lane. | Blocking buffer: 3% nonfat dry milk in TBST. | Detection: ECL Enhanced Kit . | Exposure time: 90s.



Immunofluorescence analysis of U2OS cells using SSBP1 antibody (TA382030). Blue: DAPI for nuclear staining.



Confocal immunofluorescence analysis of U2OS cells using SSBP1 Polyclonal Antibody (TA382030) at dilution of 1:100. Blue: DAPI for nuclear staining.



Immunoprecipitation analysis of 200ug extracts of MCF7 cells using 1ug SSBP1 antibody (TA382030). Western blot was performed from the immunoprecipitate using SSBP1 antibody (TA382030) at a dilution of 1:1000.