

Product datasheet for **TA382022**

SFRS2B (SRSF8) Rabbit Polyclonal Antibody

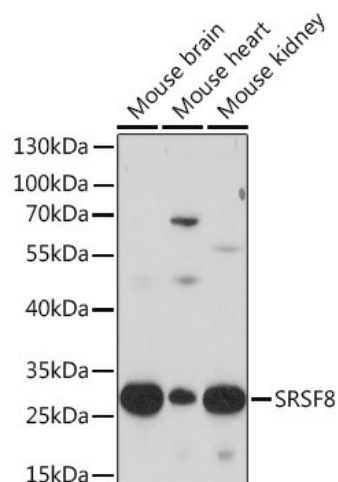
Product data:

Product Type:	Primary Antibodies
Applications:	WB
Recommended Dilution:	WB,1:500 - 1:2000
Reactivity:	Mouse
Host:	Rabbit
Isotype:	IgG
Clonality:	Polyclonal
Immunogen:	A synthetic peptide corresponding to a sequence within amino acids 1-100 of human SRSF8 (NP_115285.1).
Formulation:	Buffer: PBS with 0.02% sodium azide,50% glycerol,pH7.3.
Concentration:	lot specific
Purification:	Affinity purification
Conjugation:	Unconjugated
Storage:	Store at -20°C. Avoid freeze / thaw cycles.
Stability:	Shelf life: one year from despatch.
Gene Name:	serine/arginine-rich splicing factor 8
Database Link:	Q9BRL6
Background:	This gene encodes a member of a family of proteins containing a ribonucleoprotein (RNP)-type RNA binding motif and a carboxyl-terminal arginine-serine-rich (RS) domain. The encoded protein functions as a pre-mRNA splicing factor. There is a pseudogene for this gene on chromosome 7. Alternative splicing results in multiple transcript variants.
Synonyms:	DSM-1; SFRS2B; SRP46



[View online »](#)

Product images:



Western blot analysis of extracts of various cell lines, using SRSF8 Rabbit pAb (TA382022) at 1:1000 dilution. | Secondary antibody: HRP Goat Anti-Rabbit IgG (H+L) at 1:10000 dilution. | Lysates/proteins: 25ug per lane. | Blocking buffer: 3% nonfat dry milk in TBST. | Detection: ECL Basic Kit . | Exposure time: 10s.