

## Product datasheet for **TA382013S**

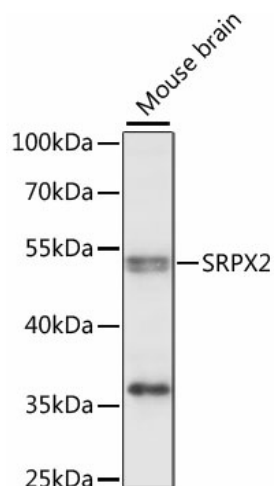
### SRPX2 Rabbit Polyclonal Antibody

#### Product data:

Product Type:	Primary Antibodies
Applications:	WB
Recommended Dilution:	WB,1:200 - 1:2000
Reactivity:	Mouse
Modifications:	Unmodified
Host:	Rabbit
Isotype:	IgG
Clonality:	Polyclonal
Immunogen:	Recombinant fusion protein containing a sequence corresponding to amino acids 166-465 of human SRPX2 (NP_055282.1).
Formulation:	Buffer: PBS with 0.02% sodium azide,50% glycerol,pH7.3.
Concentration:	lot specific
Purification:	Affinity purification
Conjugation:	Unconjugated
Storage:	Store at -20°C. Avoid freeze / thaw cycles.
Stability:	Shelf life: one year from despatch.
Predicted Protein Size:	52kDa
Gene Name:	sushi repeat containing protein, X-linked 2
Database Link:	<a href="#">O60687</a>
Background:	This gene encodes a secreted protein that contains three sushi repeat motifs. The encoded protein may play a role in the development of speech and language centers in the brain. This protein may also be involved in angiogenesis. Mutations in this gene are the cause of bilateral perisylvian polymicrogyria, rolandic epilepsy, speech dyspraxia and mental retardation.
Synonyms:	BPP; CBPS; PMGX; RESDX; SRPUL



[View online »](#)

**Product images:**

Western blot analysis of extracts of mouse brain, using SRPX2 antibody ([TA382013]) at 1:1000 dilution. | Secondary antibody: HRP Goat Anti-Rabbit IgG (H+L) at 1:10000 dilution. | Lysates/proteins: 25ug per lane. | Blocking buffer: 3% nonfat dry milk in TBST. | Detection: ECL Enhanced Kit . | Exposure time: 10s.