

Product datasheet for **TA382009S**

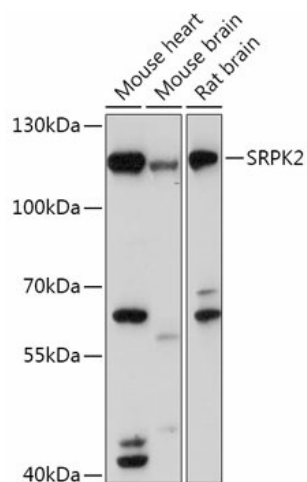
SRPK2 Rabbit Polyclonal Antibody

Product data:

Product Type:	Primary Antibodies
Applications:	ELISA, WB
Recommended Dilution:	WB, 1:500 - 1:2000 ELISA, Recommended starting concentration is 1 µg/mL. Please optimize the concentration based on your specific assay requirements.
Reactivity:	Human, Mouse, Rat
Modifications:	Unmodified
Host:	Rabbit
Isotype:	IgG
Clonality:	Polyclonal
Formulation:	Buffer: PBS with 0.02% sodium azide, 50% glycerol, pH 7.3.
Concentration:	lot specific
Purification:	Affinity purification
Conjugation:	Unconjugated
Storage:	Store at -20°C. Avoid freeze / thaw cycles.
Stability:	Shelf life: one year from despatch.
Predicted Protein Size:	78kDa
Gene Name:	SRSF protein kinase 2
Database Link:	Entrez Gene 6733 Human P78362
Background:	Enables ATP binding activity; magnesium ion binding activity; and protein serine/threonine kinase activity. Involved in several processes, including nucleic acid metabolic process; peptidyl-serine phosphorylation; and regulation of viral genome replication. Located in chromatin; cytosol; and nuclear lumen.
Synonyms:	FLJ36101; H_RG152G17.1a; H_RG152G17.1b; SFRSK2; WUGSC; H_RG152G17.1a



[View online »](#)

Product images:


Western blot analysis of various lysates using SRPK2 Rabbit pAb ([TA382009]) at 1:1000 dilution. Secondary antibody: HRP-conjugated Goat anti-Rabbit IgG (H+L) (AS014) at 1:10000 dilution. Lysates/proteins: 25µg per lane. Blocking buffer: 3% nonfat dry milk in TBST. Detection: ECL Basic Kit (RM00020). Exposure time: 120s.