

## Product datasheet for TA381999S

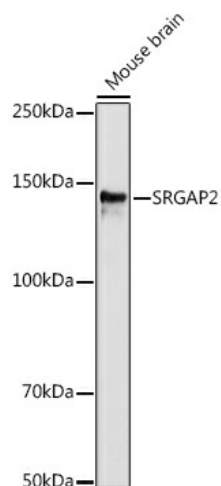
### SRGAP2 Rabbit Polyclonal Antibody

#### Product data:

Product Type:	Primary Antibodies
Applications:	WB
Recommended Dilution:	WB,1:500 - 1:1000
Reactivity:	Human, Mouse
Modifications:	Unmodified
Host:	Rabbit
Isotype:	IgG
Clonality:	Polyclonal
Immunogen:	A synthetic Peptide of human SRGAP2
Formulation:	Buffer: PBS with 0.02% sodium azide,pH7.3.
Concentration:	lot specific
Purification:	Affinity purification
Conjugation:	Unconjugated
Storage:	Store at 4°C. Avoid freeze / thaw cycles.   Buffer: PBS with 0.02% sodium azide,pH7.3.
Stability:	Shelf life: one year from despatch.
Predicted Protein Size:	120kDa
Gene Name:	SLIT-ROBO Rho GTPase activating protein 2
Database Link:	<a href="#">Entrez Gene 23380 Human Q75044</a>
Background:	This locus encodes a member of the SLIT-ROBO Rho GTPase activating protein family. The encoded protein stimulates GTPase activity of Rac1, and plays a role in cortical neuron development. This locus has several paralogs on human chromosome 1 resulting from segmental duplication. While this locus itself is conserved among various species, the paralogs are found only in the genus Homo, and not in the genomes of non-human great apes. Alternatively spliced transcript variants have been described for this locus.
Synonyms:	FNBP2; KIAA0456; SRGAP3



[View online »](#)

**Product images:**

Western blot analysis of extracts of various cell lines, using SRGAP2 antibody ([TA381999]) at 1:1000 dilution. | Secondary antibody: HRP Goat Anti-Rabbit IgG (H+L) at 1:10000 dilution. | Lysates/proteins: 25ug per lane. | Blocking buffer: 3% nonfat dry milk in TBST. | Detection: ECL Basic Kit . | Exposure time: 180s.