

Product datasheet for **TA381983S**

SRBD1 Rabbit Polyclonal Antibody

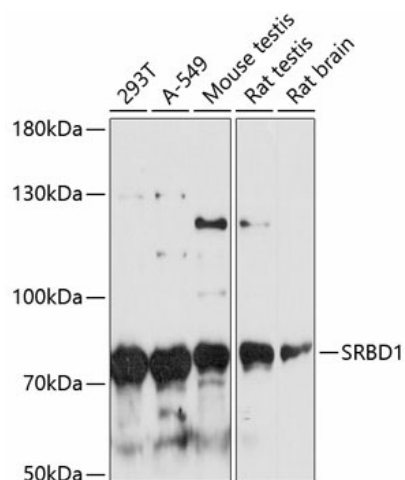
Product data:

Product Type:	Primary Antibodies
Applications:	WB
Recommended Dilution:	WB,1:500 - 1:2000
Reactivity:	Human, Mouse, Rat
Modifications:	Unmodified
Host:	Rabbit
Isotype:	IgG
Clonality:	Polyclonal
Immunogen:	Recombinant fusion protein containing a sequence corresponding to amino acids 330-600 of human SRBD1 (NP_060549.4).
Formulation:	Buffer: PBS with 0.02% sodium azide,50% glycerol,pH7.3.
Concentration:	lot specific
Purification:	Affinity purification
Conjugation:	Unconjugated
Storage:	Store at -20°C. Avoid freeze / thaw cycles.
Stability:	Shelf life: one year from despatch.
Predicted Protein Size:	69kDa/111kDa
Gene Name:	S1 RNA binding domain 1
Database Link:	Entrez Gene 55133 Human Q8N5C6
Synonyms:	FLJ10379; H_NH0576F01.1; WUGSC:H_NH0576F01.1



[View online »](#)

Product images:



Western blot analysis of extracts of various cell lines, using SRBD1 antibody ([TA381983]) at 1:3000 dilution. | Secondary antibody: HRP Goat Anti-Rabbit IgG (H+L) at 1:10000 dilution. | Lysates/proteins: 25ug per lane. | Blocking buffer: 3% nonfat dry milk in TBST. | Detection: ECL Basic Kit . | Exposure time: 90s.