

Product datasheet for **TA381971S**

Alpha Fodrin (SPTAN1) Rabbit Polyclonal Antibody

Product data:

Product Type:	Primary Antibodies
Applications:	ELISA, ICC/IF, IHC, WB
Recommended Dilution:	WB, 1:500 - 1:2000 IHC-P, 1:50 - 1:200 IF/ICC, 1:50 - 1:200 ELISA, Recommended starting concentration is 1 µg/mL. Please optimize the concentration based on your specific assay requirements.
Reactivity:	Human, Mouse, Rat
Modifications:	Unmodified
Host:	Rabbit
Isotype:	IgG
Clonality:	Polyclonal
Formulation:	Buffer: PBS with 0.02% sodium azide, 50% glycerol, pH 7.3.
Concentration:	lot specific
Purification:	Affinity purification
Conjugation:	Unconjugated
Storage:	Store at -20°C. Avoid freeze / thaw cycles.
Stability:	Shelf life: one year from despatch.
Predicted Protein Size:	285kDa
Gene Name:	spectrin alpha, non-erythrocytic 1
Database Link:	Entrez Gene 6709 Human Q13813



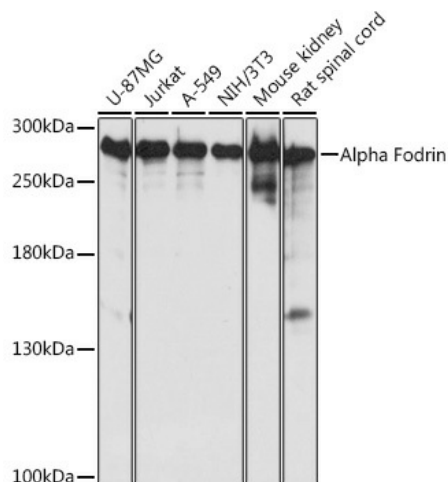
[View online »](#)

Background:

Spectrins are a family of filamentous cytoskeletal proteins that function as essential scaffold proteins that stabilize the plasma membrane and organize intracellular organelles. Spectrins are composed of alpha and beta dimers that associate to form tetramers linked in a head-to-head arrangement. This gene encodes an alpha spectrin that is specifically expressed in nonerythrocytic cells. The encoded protein has been implicated in other cellular functions including DNA repair and cell cycle regulation. Mutations in this gene are the cause of early infantile epileptic encephalopathy-5. Alternate splicing results in multiple transcript variants.

Synonyms:

(ALPHA)II-SPECTRIN; FLJ44613; NEAS; SPTA2

Product images:


Western blot analysis of various lysates using Alpha Fodrin Rabbit pAb (TA381971) at 1:3000 dilution.

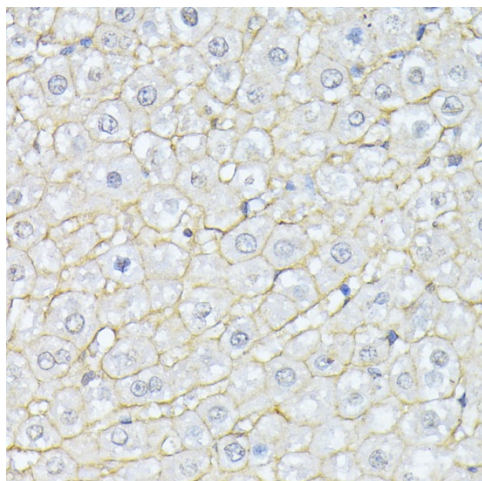
Secondary antibody: HRP-conjugated Goat anti-Rabbit IgG (H+L) (AS014) at 1:10000 dilution.

Lysates/proteins: 25µg per lane.

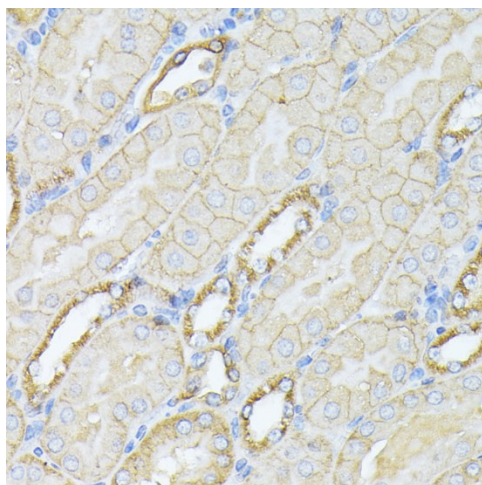
Blocking buffer: 3% nonfat dry milk in TBST.

Detection: ECL Basic Kit (RM00020).

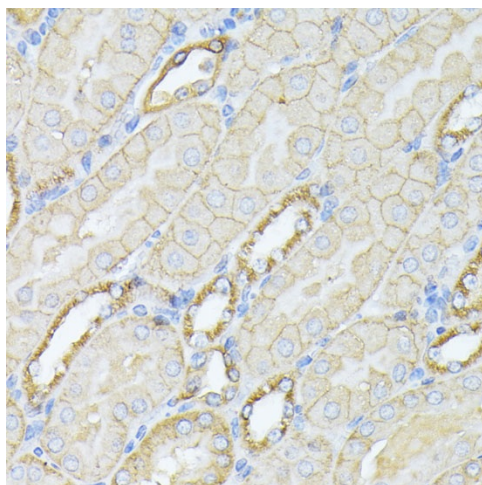
Exposure time: 1s.



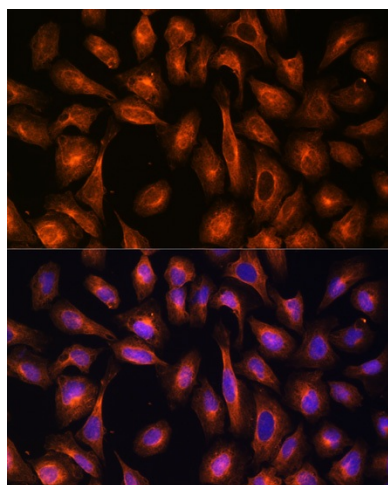
Immunohistochemistry analysis of paraffin-embedded Rat liver using Alpha Fodrin Rabbit pAb (TA381971) at dilution of 1:100 (40x lens). Microwave antigen retrieval performed with 0.01M PBS Buffer (pH 7.2) prior to IHC staining.



Immunohistochemistry analysis of paraffin-embedded Human stomach using Alpha Fodrin Rabbit pAb ([TA381971]) at dilution of 1:100 (40x lens). Microwave antigen retrieval performed with 0.01M PBS Buffer (pH 7.2) prior to IHC staining.



Immunohistochemistry analysis of paraffin-embedded Mouse kidney using Alpha Fodrin Rabbit pAb ([TA381971]) at dilution of 1:100 (40x lens). Microwave antigen retrieval performed with 0.01M PBS Buffer (pH 7.2) prior to IHC staining.



Immunofluorescence analysis of U-2 OS cells using Alpha Fodrin Rabbit pAb ([TA381971]) at dilution of 1:100. Secondary antibody: Cy3-conjugated Goat anti-Rabbit IgG (H+L) (AS007) at 1:500 dilution. Blue: DAPI for nuclear staining.