

Product datasheet for **TA381970S**

alpha 1 Spectrin (SPTA1) Rabbit Polyclonal Antibody

Product data:

Product Type:	Primary Antibodies
Applications:	ELISA, ICC/IF, IHC, WB
Recommended Dilution:	WB, 1:500 - 1:2000 IHC-P, 1:50 - 1:200 IF/ICC, 1:50 - 1:200 ELISA, Recommended starting concentration is 1 µg/mL. Please optimize the concentration based on your specific assay requirements.
Reactivity:	Human, Mouse, Rat
Modifications:	Unmodified
Host:	Rabbit
Isotype:	IgG
Clonality:	Polyclonal
Formulation:	Buffer: PBS with 0.02% sodium azide, 50% glycerol, pH 7.3.
Concentration:	lot specific
Purification:	Affinity purification
Conjugation:	Unconjugated
Storage:	Store at -20°C. Avoid freeze / thaw cycles.
Stability:	Shelf life: one year from despatch.
Predicted Protein Size:	280kDa
Gene Name:	spectrin alpha, erythrocytic 1
Database Link:	Entrez Gene 6708 Human P02549



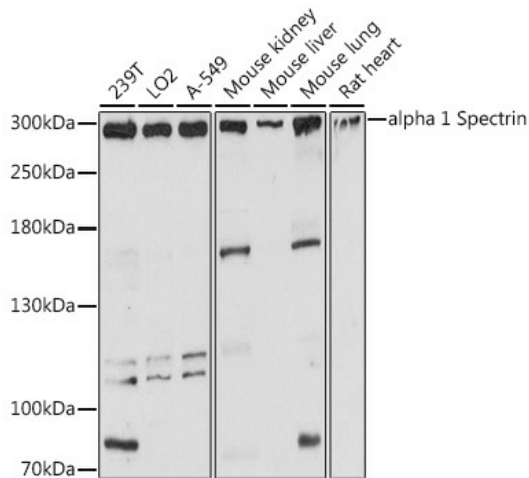
[View online »](#)

Background:

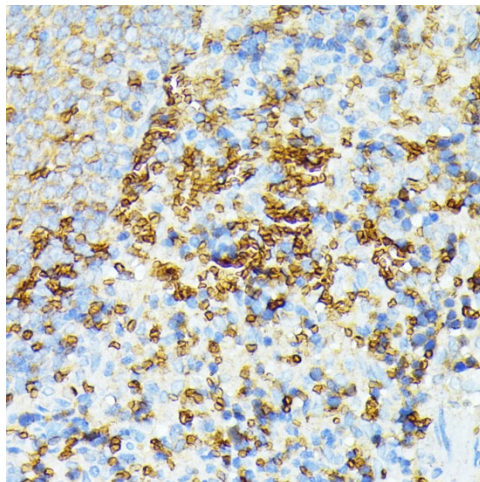
This gene encodes a member of a family of molecular scaffold proteins that link the plasma membrane to the actin cytoskeleton and functions in the determination of cell shape, arrangement of transmembrane proteins, and organization of organelles. The encoded protein is primarily composed of 22 spectrin repeats which are involved in dimer formation. It forms a component of the erythrocyte plasma membrane. Mutations in this gene result in a variety of hereditary red blood cell disorders, including elliptocytosis-2, pyropoikilocytosis, and spherocytosis, type 3.

Synonyms:

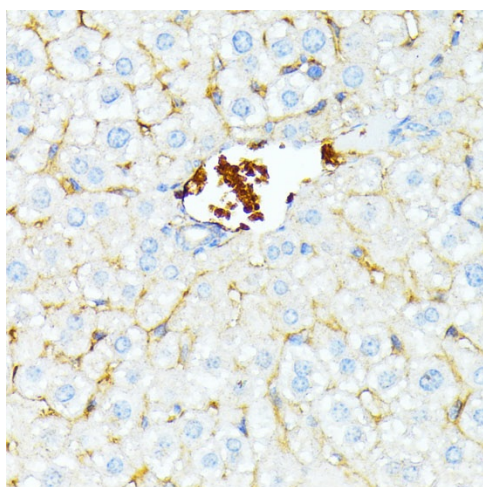
EL2; HPP; HS3; SPH3; SPTA

Product images:


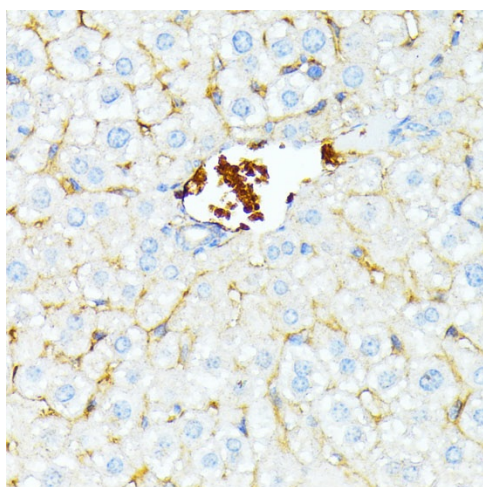
Western blot analysis of various lysates using alpha 1 Spectrin Rabbit pAb ([TA381970]) at 1:3000 dilution.
Secondary antibody: HRP-conjugated Goat anti-Rabbit IgG (H+L) (AS014) at 1:10000 dilution.
Lysates/proteins: 25µg per lane.
Blocking buffer: 3% nonfat dry milk in TBST.
Detection: ECL Basic Kit (RM00020).
Exposure time: 10s.



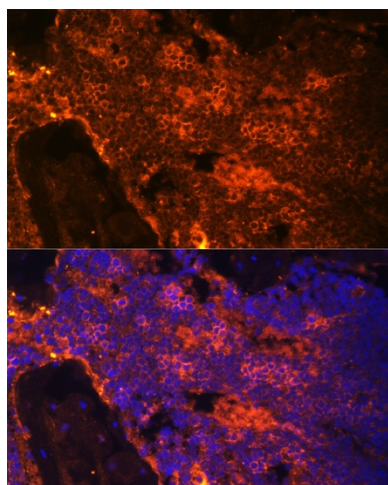
Immunohistochemistry analysis of paraffin-embedded Human tonsil using alpha 1 Spectrin Rabbit pAb ([TA381970]) at dilution of 1:100 (40x lens). Microwave antigen retrieval performed with 0.01M PBS Buffer (pH 7.2) prior to IHC staining.



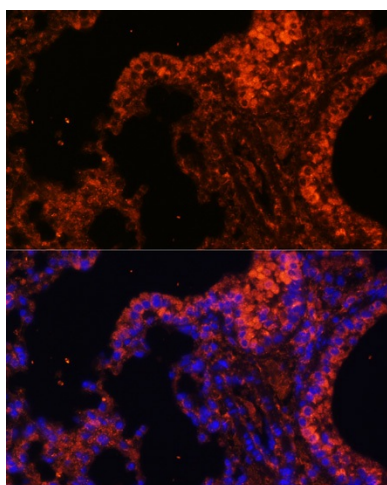
Immunohistochemistry analysis of paraffin-embedded Rat spleen using alpha 1 Spectrin Rabbit pAb ([TA381970]) at dilution of 1:100 (40x lens). Microwave antigen retrieval performed with 0.01M PBS Buffer (pH 7.2) prior to IHC staining.



Immunohistochemistry analysis of paraffin-embedded Mouse liver using alpha 1 Spectrin Rabbit pAb ([TA381970]) at dilution of 1:100 (40x lens). Microwave antigen retrieval performed with 0.01M PBS Buffer (pH 7.2) prior to IHC staining.



Immunofluorescence analysis of paraffin-embedded rat bone marrow using alpha 1 Spectrin Rabbit pAb ([TA381970]) at dilution of 1:100. Secondary antibody: Cy3-conjugated Goat anti-Rabbit IgG (H+L) (AS007) at 1:500 dilution. Blue: DAPI for nuclear staining.



Immunofluorescence analysis of paraffin-embedded mouse lung using alpha 1 Spectrin Rabbit pAb ([TA381970]) at dilution of 1:100. Secondary antibody: Cy3-conjugated Goat anti-Rabbit IgG (H+L) (AS007) at 1:500 dilution. Blue: DAPI for nuclear staining.