

Product datasheet for **TA381970**

alpha 1 Spectrin (SPTA1) Rabbit Polyclonal Antibody

Product data:

Product Type:	Primary Antibodies
Applications:	ICC/IF, IHC, WB
Recommended Dilution:	WB,1:500 - 1:2000 IHC,1:50 - 1:200 IF,1:50 - 1:200
Reactivity:	Human, Mouse, Rat
Modifications:	Unmodified
Host:	Rabbit
Isotype:	IgG
Clonality:	Polyclonal
Immunogen:	Recombinant fusion protein containing a sequence corresponding to amino acids 940-1160 of human alpha 1 Spectrin (NP_003117.2).
Formulation:	Buffer: PBS with 0.02% sodium azide,50% glycerol,pH7.3.
Concentration:	lot specific
Purification:	Affinity purification
Conjugation:	Unconjugated
Storage:	Store at -20°C. Avoid freeze / thaw cycles.
Stability:	Shelf life: one year from despatch.
Predicted Protein Size:	279kDa/280kDa
Gene Name:	spectrin alpha, erythrocytic 1
Database Link:	Entrez Gene 6708 Human P02549



[View online »](#)

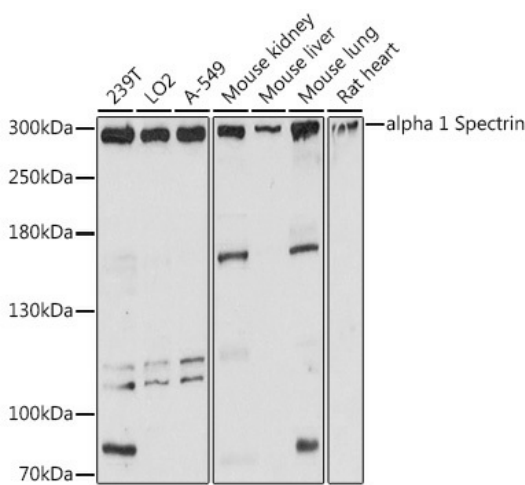
Background:

Spectrin is an actin crosslinking and molecular scaffold protein that links the plasma membrane to the actin cytoskeleton, and functions in the determination of cell shape, arrangement of transmembrane proteins, and organization of organelles. It is a tetramer made up of alpha-beta dimers linked in a head-to-head arrangement. This gene is one member of a family of alpha-spectrin genes. The encoded protein is primarily composed of 22 spectrin repeats which are involved in dimer formation. It forms weaker tetramer interactions than non-erythrocytic alpha spectrin, which may increase the plasma membrane elasticity and deformability of red blood cells. Mutations in this gene result in a variety of hereditary red blood cell disorders, including elliptocytosis type 2, pyropoikilocytosis, and spherocytic hemolytic anemia.

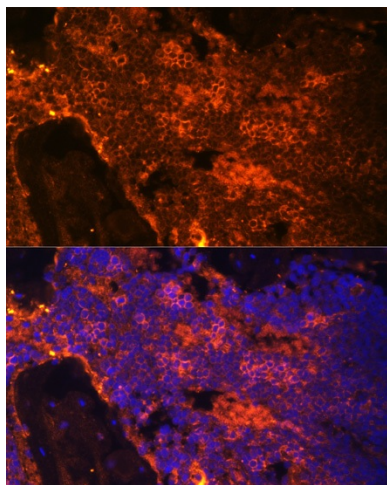
Synonyms:

EL2; HPP; HS3; SPH3; SPTA

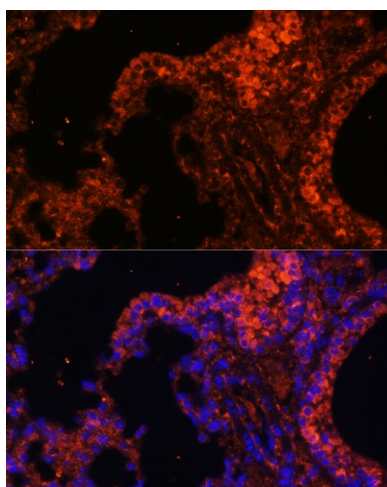
Product images:



Western blot analysis of extracts of various cell lines, using alpha 1 Spectrin antibody (TA381970) at 1:3000 dilution. |Secondary antibody: HRP Goat Anti-Rabbit IgG (H+L) at 1:10000 dilution. |Lysates/proteins: 25ug per lane. |Blocking buffer: 3% nonfat dry milk in TBST. |Detection: ECL Basic Kit . |Exposure time: 10s.



Immunofluorescence analysis of rat bone marrow cells using alpha 1 Spectrin antibody (TA381970) at dilution of 1:100. Blue: DAPI for nuclear staining.



Immunofluorescence analysis of mouse lung cells using alpha 1 Spectrin antibody (TA381970) at dilution of 1:100. Blue: DAPI for nuclear staining.