

## Product datasheet for **TA381966S**

### Sprouty 3 (SPRY3) Rabbit Polyclonal Antibody

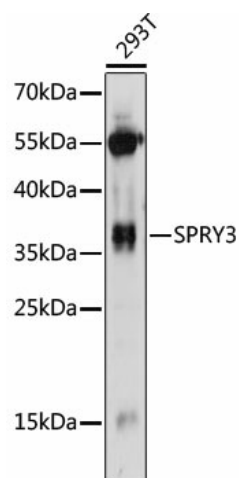
#### Product data:

Product Type:	Primary Antibodies
Applications:	ELISA, WB
Recommended Dilution:	WB, 1:500 - 1:2000 ELISA, Recommended starting concentration is 1 µg/mL. Please optimize the concentration based on your specific assay requirements.
Reactivity:	Human
Modifications:	Unmodified
Host:	Rabbit
Isotype:	IgG
Clonality:	Polyclonal
Formulation:	Buffer: PBS with 0.02% sodium azide, 50% glycerol, pH 7.3.
Concentration:	lot specific
Purification:	Affinity purification
Conjugation:	Unconjugated
Storage:	Store at -20°C. Avoid freeze / thaw cycles.
Stability:	Shelf life: one year from despatch.
Predicted Protein Size:	31kDa
Gene Name:	sprouty RTK signaling antagonist 3
Database Link:	<a href="#">Entrez Gene 10251 Human</a> <a href="#">O43610</a>
Background:	Involved in negative regulation of MAPK cascade. Predicted to be located in membrane. Predicted to be active in cytosol.
Synonyms:	HSPRY3; Spry-3



[View online »](#)

Product images:



Western blot analysis of lysates from 293T cells