

## Product datasheet for **TA381966**

### Sprouty 3 (SPRY3) Rabbit Polyclonal Antibody

#### Product data:

Product Type:	Primary Antibodies
Applications:	WB
Recommended Dilution:	WB,1:500 - 1:2000
Reactivity:	Human
Modifications:	Unmodified
Host:	Rabbit
Isotype:	IgG
Clonality:	Polyclonal
Immunogen:	A synthetic peptide corresponding to a sequence within amino acids 200 to the C-terminus of human SPRY3 (NP_005831.1).
Formulation:	Buffer: PBS with 0.02% sodium azide,50% glycerol,pH7.3.
Concentration:	lot specific
Purification:	Affinity purification
Conjugation:	Unconjugated
Storage:	Store at -20°C. Avoid freeze / thaw cycles.
Stability:	Shelf life: one year from despatch.
Predicted Protein Size:	31kDa
Gene Name:	sprouty RTK signaling antagonist 3
Database Link:	<a href="#">Entrez Gene 10251 Human O43610</a>



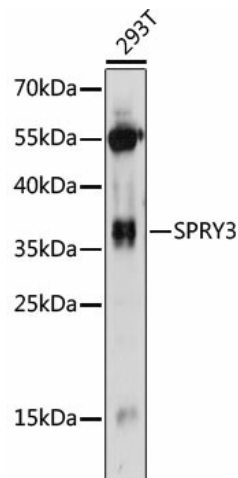
[View online »](#)

**Background:**

Members of the Sprouty family (Sprouty 1-4) are inducible negative regulators of growth factors that act through tyrosine kinase receptors. Mammalian Sprouty homologs share a well-conserved cysteine-rich carboxy-terminal domain with their *Drosophila* counterparts. Sprouty proteins are cytoplasmic in unstimulated cells, but in cells stimulated by growth factors they anchor to the plasma membrane by palmitoylation. Sprouty 1 and 2 associate with caveolin-1 in perinuclear and vesicular structures and are phosphorylated on serine residues. Sprouty 2 can associate with c-Cbl, a downregulator of RTK signaling, and inhibit the activities of several growth factors. Unlike the widely expressed Sprouty members 1, 2 and 4, Sprouty 3 expression is restricted to adult brain and testis. Sprouty 4 is a target of the WNT/ $\beta$ -catenin signaling pathway in progenitor cells. In conclusion, members of Sprouty inhibit FGF and VEGF-mediated cell proliferation, suggesting that they may regulate angiogenesis in normal and disease processes.

**Synonyms:**

HSPRY3; Spry-3

**Product images:**

Western blot analysis of extracts of 293T cells, using SPRY3 antibody (TA381966) at 1:1000 dilution. | Secondary antibody: HRP Goat Anti-Rabbit IgG (H+L) at 1:10000 dilution. | Lysates/proteins: 25ug per lane. | Blocking buffer: 3% nonfat dry milk in TBST. | Detection: ECL Basic Kit. | Exposure time: 60s.