

Product datasheet for **TA381960S**

SPRR1A Rabbit Polyclonal Antibody

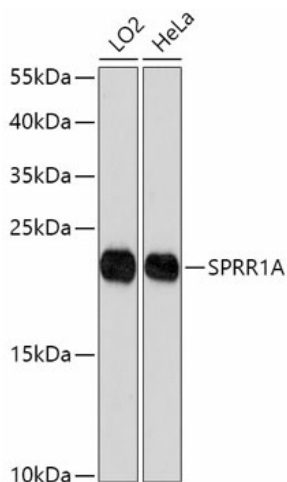
Product data:

Product Type:	Primary Antibodies
Applications:	ELISA, ICC/IF, WB
Recommended Dilution:	WB, 1:500 - 1:1000 IF/ICC, 1:50 - 1:200 ELISA, Recommended starting concentration is 1 µg/mL. Please optimize the concentration based on your specific assay requirements.
Reactivity:	Human, Mouse, Rat
Modifications:	Unmodified
Host:	Rabbit
Isotype:	IgG
Clonality:	Polyclonal
Formulation:	Buffer: PBS with 0.02% sodium azide, 50% glycerol, pH 7.3.
Concentration:	lot specific
Purification:	Affinity purification
Conjugation:	Unconjugated
Storage:	Store at -20°C. Avoid freeze / thaw cycles.
Stability:	Shelf life: one year from despatch.
Predicted Protein Size:	10kDa
Gene Name:	small proline rich protein 1A
Database Link:	Entrez Gene 6698 Human P35321
Background:	A structural constituent of skin epidermis. Involved in keratinocyte differentiation and peptide cross-linking. Located in cornified envelope.
Synonyms:	OTTHUMP00000016121; SPR-IA; SPRK

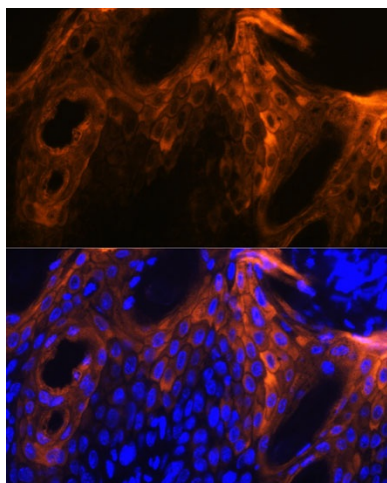


[View online »](#)

Product images:



Western blot analysis of lysates from Mouse stomach



Immunofluorescence analysis of paraffin-embedded mouse skin using SPRR1A Rabbit pAb ([TA381960]) at dilution of 1:100 (40x lens). Secondary antibody: Cy3-conjugated Goat anti-Rabbit IgG (H+L) (AS007) at 1:500 dilution. Blue: DAPI for nuclear staining. Perform high pressure antigen retrieval with 0.01 M citrate buffer (pH 6.0) prior to IF staining.