

Product datasheet for **TA381960**

SPRR1A Rabbit Polyclonal Antibody

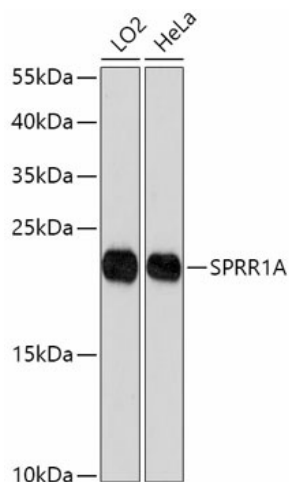
Product data:

Product Type:	Primary Antibodies
Applications:	ICC/IF, WB
Recommended Dilution:	WB,1:500 - 1:2000 IF,1:50 - 1:200
Reactivity:	Human, Mouse, Rat
Modifications:	Unmodified
Host:	Rabbit
Isotype:	IgG
Clonality:	Polyclonal
Immunogen:	A synthetic peptide of Human SPRR1A.
Formulation:	Buffer: PBS with 0.02% sodium azide,50% glycerol,pH7.3.
Concentration:	lot specific
Purification:	Affinity purification
Conjugation:	Unconjugated
Storage:	Store at -20°C. Avoid freeze / thaw cycles.
Stability:	Shelf life: one year from despatch.
Gene Name:	small proline rich protein 1A
Database Link:	Entrez Gene 6698 Human P35321
Background:	Cross-linked envelope protein of keratinocytes. It is a keratinocyte protein that first appears in the cell cytosol, but ultimately becomes cross-linked to membrane proteins by transglutaminase. All that results in the formation of an insoluble envelope beneath the plasma membrane.
Synonyms:	OTTHUMP00000016121; SPR-IA; SPRK

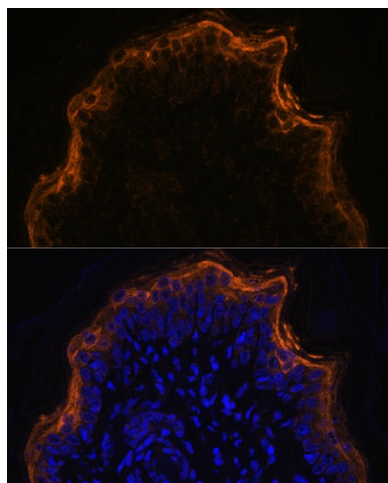


[View online »](#)

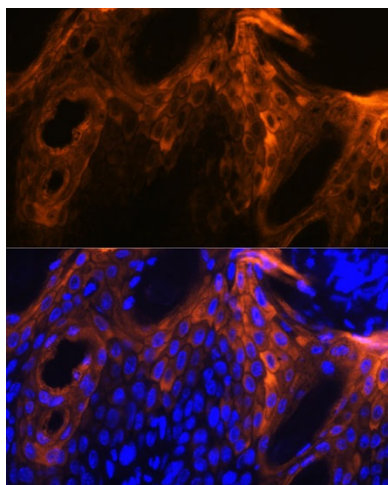
Product images:



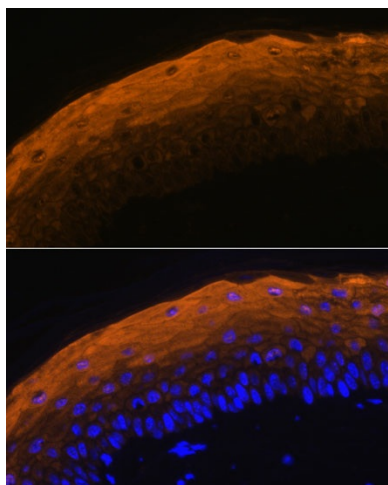
Western blot analysis of extracts of various cell lines, using SPRR1A antibody (TA381960) at 1:1000 dilution. | Secondary antibody: HRP Goat Anti-Rabbit IgG (H+L) at 1:10000 dilution. | Lysates/proteins: 25ug per lane. | Blocking buffer: 3% nonfat dry milk in TBST. | Detection: ECL Basic Kit . | Exposure time: 90s.



Immunofluorescence analysis of rat skin using SPRR1A antibody (TA381960) at dilution of 1:100. Blue: DAPI for nuclear staining.



Immunofluorescence analysis of human skin using SPRR1A antibody (TA381960) at dilution of 1:100. Blue: DAPI for nuclear staining.



Immunofluorescence analysis of mouse skin using SPRR1A antibody (TA381960) at dilution of 1:100. Blue: DAPI for nuclear staining.