

## Product datasheet for **TA381943**

### S Protein Rabbit Polyclonal Antibody

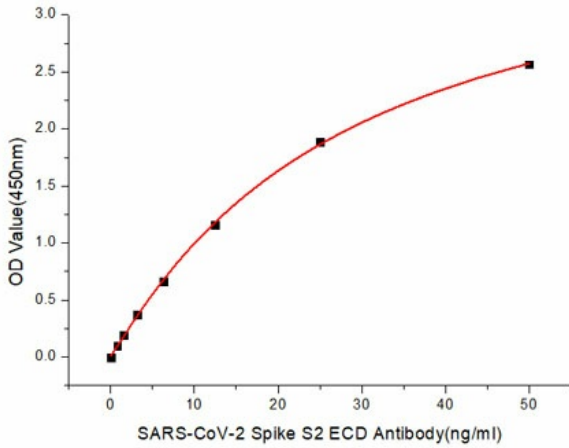
#### Product data:

Product Type:	Primary Antibodies
Applications:	Dot, ICC/IF, IP, WB
Recommended Dilution:	Elisa, 1:500 - 1:2000 WB, 1:500 - 1:2000 FC, 1:50 - 1:200 IF, 1:50 - 1:200
Reactivity:	SARS-CoV-2, Human
Host:	Rabbit
Isotype:	IgG
Clonality:	Polyclonal
Immunogen:	Recombinant fusion protein of SARS-CoV-2 Spike S2 ECD.
Formulation:	Buffer: PBS with 0.02% sodium azide, 50% glycerol, pH 7.3.
Concentration:	lot specific
Purification:	Affinity purification
Conjugation:	Unconjugated
Storage:	Store at -20°C. Avoid freeze / thaw cycles.
Stability:	Shelf life: one year from despatch.
Gene Name:	S Protein
Database Link:	<a href="#">Entrez Gene 43740568 SARS-CoV-2 P0DTC2</a>
Background:	The spike protein (S) of coronavirus (CoV) attaches the virus to its cellular receptor, angiotensin-converting enzyme 2 (ACE2). A defined receptor-binding domain (RBD) on S mediates this interaction. The S protein plays key parts in the induction of neutralizing-antibody and T-cell responses, as well as protective immunity.

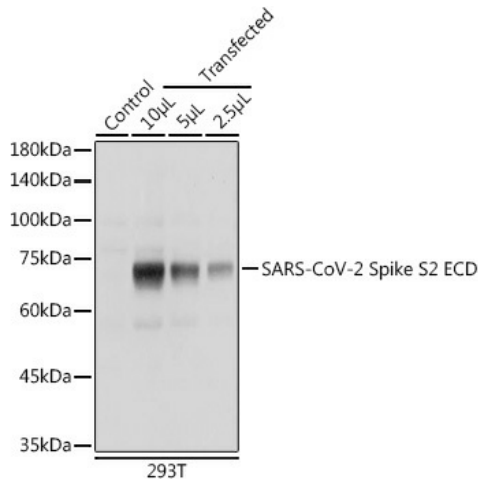


[View online »](#)

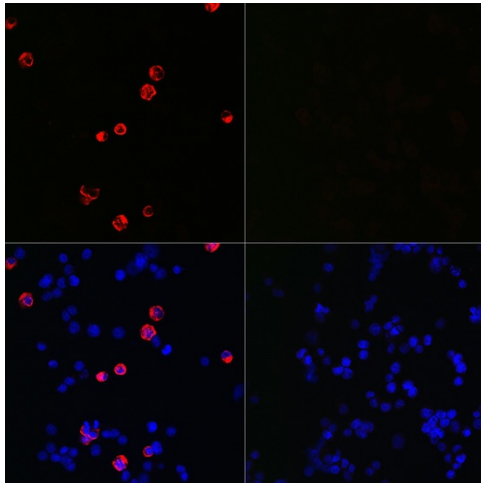
Product images:



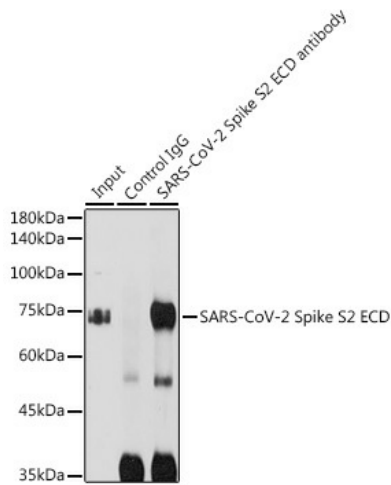
Immobilized Recombinant SARS-COV2 S-ECD-PFS Protein(RP01283LQ) at 1µg/mL (100µL/well) can bind SARS-CoV-2 Spike S2 ECD Rabbit pAb (TA381943) with a linear range of 3.12-50ng/mL.



Western blot analysis of extracts of normal 293T cells 293T transfected with Spike S2 ECD Protein, using SARS-CoV-2 Spike S2 ECD antibody (TA381943) at 1:5000 dilution. |Secondary antibody: HRP Goat Anti-Rabbit IgG (H+L) at 1:10000 dilution. |Lysates/proteins: 25ug per lane. |Blocking buffer: 3% nonfat dry milk in TBST. |Detection: ECL Enhanced Kit . |Exposure time: 1s.



Immunofluorescence analysis of 293T cells transfected with SARS-CoV-2 Spike S2 ECD fusion protein (top left) and untreated 293T cells (top right) use SARS-CoV-2 Spike S2 ECD Rabbit pAb (TA381943) at dilution of 1:100 (40x lens). Blue: DAPI for nuclear staining.



Immunoprecipitation analysis of 300ug extracts of 293T cells using 3ug SARS-CoV-2 Spike S2 ECD antibody (TA381943). Western blot was performed from the immunoprecipitate using SARS-CoV-2 Spike S2 ECD antibody (TA381943) at a dilution of 1:5000.