

Product datasheet for **TA381940**

S Protein Rabbit Polyclonal Antibody

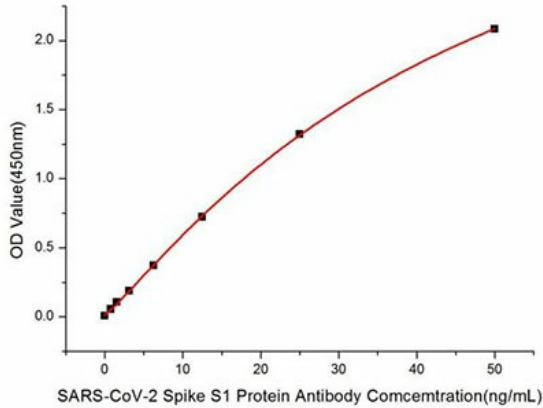
Product data:

Product Type:	Primary Antibodies
Applications:	Dot, ICC/IF, IP, WB
Recommended Dilution:	ELISA,1:20000-1:80000 WB,1:500 - 1:2000 IF,1:50 - 1:200 IP,1:50 - 1:200
Reactivity:	SARS-CoV-2, Human
Host:	Rabbit
Isotype:	IgG
Clonality:	Polyclonal
Immunogen:	Recombinant fusion protein of SARS-CoV-2 Spike S1.
Formulation:	Buffer: PBS with 0.02% sodium azide,50% glycerol,pH7.3.
Concentration:	lot specific
Purification:	Affinity purification
Conjugation:	Unconjugated
Storage:	Store at -20°C. Avoid freeze / thaw cycles.
Stability:	Shelf life: one year from despatch.
Gene Name:	S Protein
Database Link:	Entrez Gene 43740568 SARS-CoV-2 P0DTC2
Background:	The spike protein (S) of coronavirus (CoV) attaches the virus to its cellular receptor, angiotensin-converting enzyme 2 (ACE2). A defined receptor-binding domain (RBD) on S mediates this interaction. The S protein plays key parts in the induction of neutralizing-antibody and T-cell responses, as well as protective immunity.

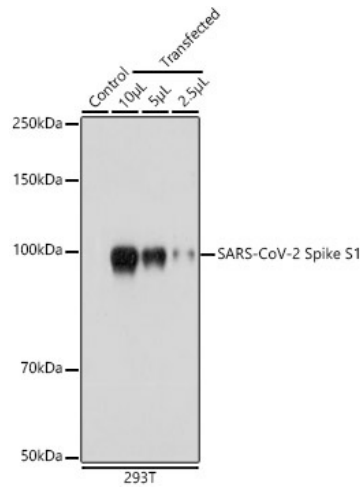


[View online »](#)

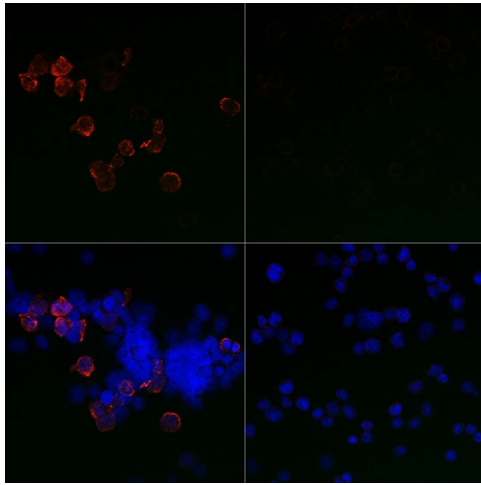
Product images:



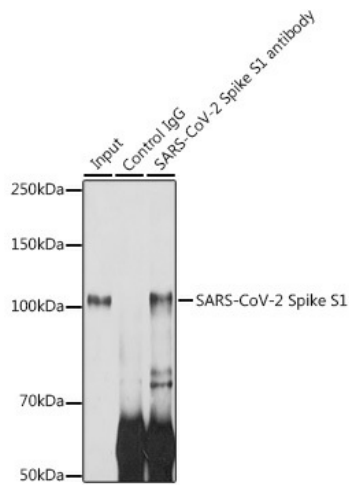
Immobilized Recombinant SARS-COV-2 Spike S1 Protein (RP01262LQ) at 1µg/mL (100µL/well) can bind SARS-CoV-2 Spike S1 Rabbit pAb (TA381940) with a linear range of 0.78-50ng/mL.



Western blot analysis of extracts of 293T cells, using SARS-CoV-2 Spike S1 antibody (TA381940) at 1:1000 dilution. |Secondary antibody: HRP Goat Anti-Rabbit IgG (H+L) at 1:10000 dilution. |Lysates/proteins: 25ug per lane. |Blocking buffer: 3% nonfat dry milk in TBST. |Detection: ECL Basic Kit . |Exposure time: 1s.



Immunofluorescence analysis of 293T cells transfected with SARS-CoV-2 Spike S1 fusion protein (top left) and untreated 293T cells (top right) use SARS-CoV-2 Spike S1 Rabbit pAb (TA381940) at dilution of 1:400 (40x lens). Blue: DAPI for nuclear staining.



Immunoprecipitation analysis of 300ug extracts of 293T cells using 3ug SARS-CoV-2 Spike S1 antibody (TA381940). Western blot was performed from the immunoprecipitate using SARS-CoV-2 Spike S1 antibody (TA381940) at a dilution of 1:1000.