

Product datasheet for **TA381935**

S Protein Rabbit Polyclonal Antibody

Product data:

Product Type:	Primary Antibodies
Applications:	Dot, ICC/IF, IP, WB
Recommended Dilution:	ELISA,1:40000-1:160000 WB,1:500 - 1:2000 IF,1:50 - 1:200 IP,1:50 - 1:200
Reactivity:	SARS-CoV-2
Host:	Rabbit
Isotype:	IgG
Clonality:	Polyclonal
Immunogen:	A synthetic peptide of SARS-CoV-2 Spike.
Formulation:	Buffer: PBS with 0.02% sodium azide,50% glycerol,pH7.3.
Concentration:	lot specific
Purification:	Affinity purification
Conjugation:	Unconjugated
Storage:	Store at -20°C. Avoid freeze / thaw cycles.
Stability:	Shelf life: one year from despatch.
Gene Name:	S Protein
Database Link:	Entrez Gene 43740568 SARS-CoV-2 P0DTC2

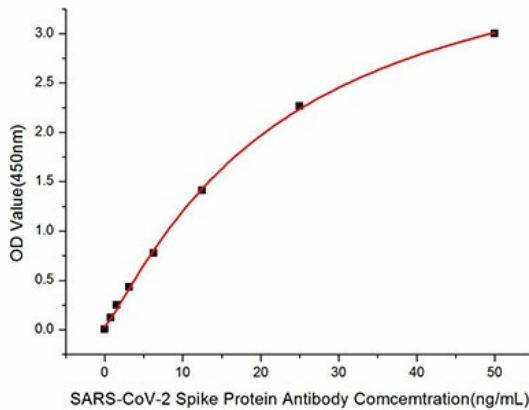


[View online »](#)

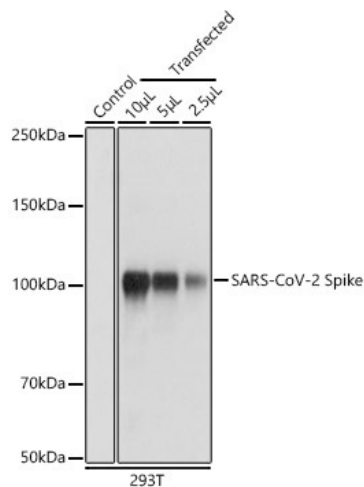
Background:

The spike (S) glycoprotein of coronaviruses contains protrusions that will only bind to certain receptors on the host cell. The spike is essential for both host specificity and viral infectivity. The spike (S) glycoprotein of coronaviruses is known to be essential in the binding of the virus to the host cell at the advent of the infection process. It's been reported that SARS-CoV-2 (COVID-19 coronavirus, 2019-nCoV) can infect the human respiratory epithelial cells through interaction with the human ACE2 receptor. S1 mainly contains a receptor binding domain (RBD), which is responsible for recognizing the cell surface receptor. The main functions for the Spike protein are summarized as: Mediate receptor binding and membrane fusion; Defines the range of the hosts and specificity of the virus; Main component to bind with the neutralizing antibody; Key target for vaccine design; Can be transmitted between different hosts through gene recombination or mutation of the receptor binding domain (RBD), leading to a higher mortality rate.

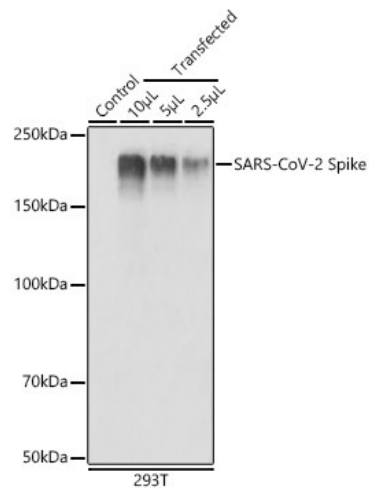
Product images:



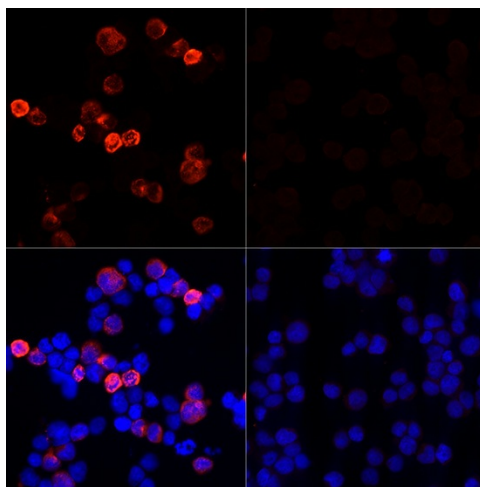
Immobilized Recombinant SARS-COV-2 S1+S2 ECD(S-ECD) Protein (RP01283) at 1µg/mL (100µL/well) can bind SARS-CoV-2 Spike Rabbit pAb (TA381935) with a linear range of 0.78-50ng/mL.



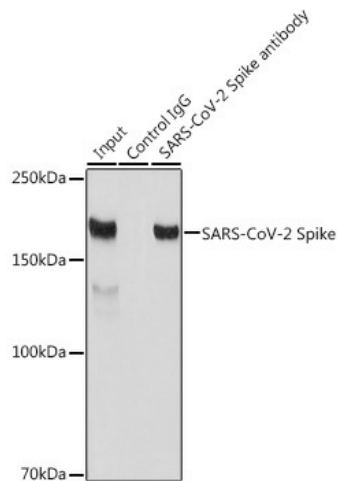
Western blot analysis of extracts of 293T cells, using SARS-CoV-2 Spike antibody (TA381935) at 1:1000 dilution. |Secondary antibody: HRP Goat Anti-Rabbit IgG (H+L) at 1:10000 dilution. |Lysates/proteins: 25ug per lane. |Blocking buffer: 3% nonfat dry milk in TBST. |Detection: ECL Basic Kit . |Exposure time: 1s.



Western blot analysis of extracts of 293T cells, using SARS-CoV-2 Spike antibody (TA381935) at 1:1000 dilution. | Secondary antibody: HRP Goat Anti-Rabbit IgG (H+L) at 1:10000 dilution. | Lysates/proteins: 25ug per lane. | Blocking buffer: 3% nonfat dry milk in TBST. | Detection: ECL Basic Kit . | Exposure time: 1s.



Immunofluorescence analysis of 293T cells transfected with SARS-CoV-2 Spike protein and untreated 293T cells use SARS-CoV-2 Spike Rabbit pAb (TA381935) at dilution of 1:100 (40x lens). Blue: DAPI for nuclear staining.



Immunoprecipitation analysis of 300ug extracts of 293T cells using 3ug SARS-CoV-2 Spike antibody (TA381935). Western blot was performed from the immunoprecipitate using SARS-CoV-2 Spike antibody (TA381935) at a dilution of 1:1000.