

Product datasheet for **TA381934**

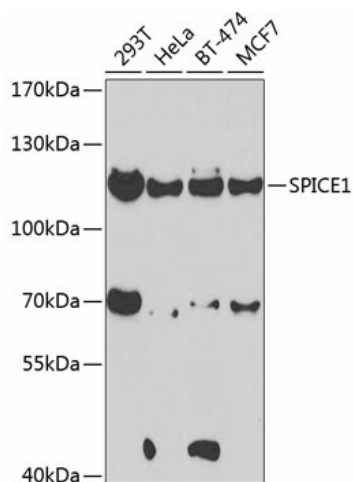
CCDC52 (SPICE1) Rabbit Polyclonal Antibody

Product data:

| | |
|-------------------------|---|
| Product Type: | Primary Antibodies |
| Applications: | WB |
| Recommended Dilution: | WB,1:500 - 1:2000 |
| Reactivity: | Human, Mouse, Rat |
| Modifications: | Unmodified |
| Host: | Rabbit |
| Isotype: | IgG |
| Clonality: | Polyclonal |
| Immunogen: | Recombinant fusion protein containing a sequence corresponding to amino acids 1-220 of human SPICE1 (NP_653319.1). |
| Formulation: | Buffer: PBS with 0.02% sodium azide,50% glycerol,pH7.3. |
| Concentration: | lot specific |
| Purification: | Affinity purification |
| Conjugation: | Unconjugated |
| Storage: | Store at -20°C. Avoid freeze / thaw cycles. |
| Stability: | Shelf life: one year from despatch. |
| Predicted Protein Size: | 96kDa |
| Gene Name: | spindle and centriole associated protein 1 |
| Database Link: | Entrez Gene 152185 Human Q8N0Z3 |
| Background: | Regulator required for centriole duplication, for proper bipolar spindle formation and chromosome congression in mitosis. |
| Synonyms: | CCDC52; SPICE |



[View online »](#)

Product images:

Western blot analysis of extracts of various cell lines, using SPICE1 antibody (TA381934) at 1:1000 dilution. | Secondary antibody: HRP Goat Anti-Rabbit IgG (H+L) at 1:10000 dilution. | Lysates/proteins: 25ug per lane. | Blocking buffer: 3% nonfat dry milk in TBST. | Detection: ECL Basic Kit . | Exposure time: 90s.