

## Product datasheet for **TA381922S**

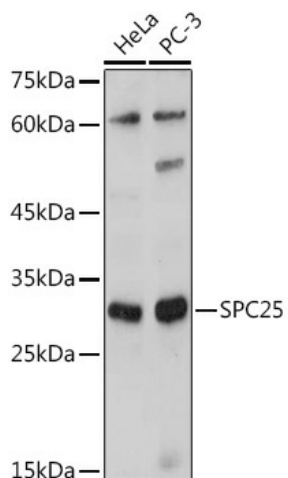
### SPC25 Rabbit Polyclonal Antibody

#### Product data:

Product Type:	Primary Antibodies
Applications:	ELISA, WB
Recommended Dilution:	WB, 1:500 - 1:1000 ELISA, Recommended starting concentration is 1 µg/mL. Please optimize the concentration based on your specific assay requirements.
Reactivity:	Human
Modifications:	Unmodified
Host:	Rabbit
Isotype:	IgG
Clonality:	Polyclonal
Formulation:	Buffer: PBS with 0.02% sodium azide, 50% glycerol, pH 7.3.
Concentration:	lot specific
Purification:	Affinity purification
Conjugation:	Unconjugated
Storage:	Store at -20°C. Avoid freeze / thaw cycles.
Stability:	Shelf life: one year from despatch.
Predicted Protein Size:	26kDa
Gene Name:	SPC25, NDC80 kinetochore complex component
Database Link:	<a href="#">Entrez Gene 57405 Human</a> <a href="#">Q9HBM1</a>
Background:	This gene encodes a protein that may be involved in kinetochore-microtubule interaction and spindle checkpoint activity.
Synonyms:	2600017H08Rik; AD024; hSpc25; MGC22228; SPBC25



[View online »](#)

**Product images:**


Western blot analysis of various lysates using SPC25 Rabbit pAb (TA381922S) at 1:1000 dilution. Secondary antibody: HRP-conjugated Goat anti-Rabbit IgG (H+L) (AS014) at 1:10000 dilution. Lysates/proteins: 25µg per lane. Blocking buffer: 3% nonfat dry milk in TBST. Detection: ECL Basic Kit (RM00020). Exposure time: 180s.