

Product datasheet for **TA381912S**

SPAG11A Rabbit Polyclonal Antibody

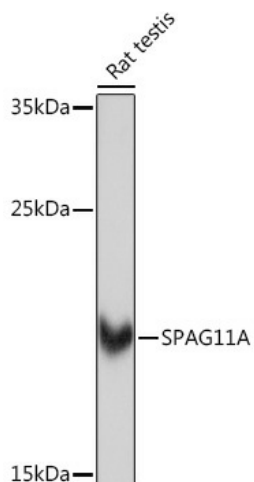
Product data:

Product Type:	Primary Antibodies
Applications:	WB
Recommended Dilution:	WB,1:500 - 1:2000
Reactivity:	Mouse, Rat
Host:	Rabbit
Isotype:	IgG
Clonality:	Polyclonal
Immunogen:	Recombinant protein of human SPAG11A.
Formulation:	Buffer: PBS with 0.02% sodium azide,50% glycerol,pH7.3.
Concentration:	lot specific
Purification:	Affinity purification
Conjugation:	Unconjugated
Storage:	Store at -20°C. Avoid freeze / thaw cycles.
Stability:	Shelf life: one year from despatch.
Predicted Protein Size:	8kDa/9kDa/12kDa/13kDa
Gene Name:	sperm associated antigen 11A
Database Link:	Q6PDA7
Background:	May have antimicrobial activity. May also play a role sperm maturation, storage, and protection.
Synonyms:	EDDM2A; EP2; HE2



[View online »](#)

Product images:



Western blot analysis of extracts of Rat testis, using SPAG11A Rabbit pAb ([TA381912]) at 1:1000 dilution. | Secondary antibody: HRP Goat Anti-Rabbit IgG (H+L) at 1:10000 dilution. | Lysates/proteins: 25ug per lane. | Blocking buffer: 3% nonfat dry milk in TBST. | Detection: ECL Basic Kit . | Exposure time: 1s.