

Product datasheet for **TA381906S**

SP140 Rabbit Polyclonal Antibody

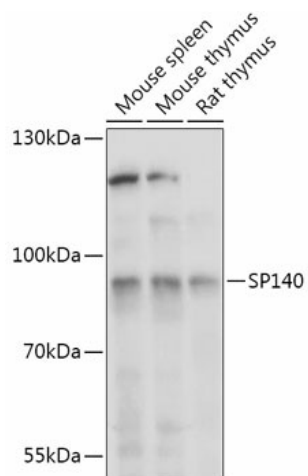
Product data:

Product Type:	Primary Antibodies
Applications:	WB
Recommended Dilution:	WB,1:500 - 1:2000
Reactivity:	Mouse, Rat
Modifications:	Unmodified
Host:	Rabbit
Isotype:	IgG
Clonality:	Polyclonal
Immunogen:	Recombinant fusion protein containing a sequence corresponding to amino acids 1-180 of human SP140 (NP_001265380).
Formulation:	Buffer: PBS with 0.02% sodium azide,50% glycerol,pH7.3.
Concentration:	lot specific
Purification:	Affinity purification
Conjugation:	Unconjugated
Storage:	Store at -20°C. Avoid freeze / thaw cycles.
Stability:	Shelf life: one year from despatch.
Gene Name:	SP140 nuclear body protein
Database Link:	Q13342
Background:	This gene encodes a member of the SP100 family of proteins, which are share common domains including an N-terminal homogeneously staining region domain followed by a SP100/autoimmune regulator/NucP41/P75/deformed epidermal autoregulatory factor domain, a plant homeobox zinc finger, and a bromodomain. The encoded protein is interferon-inducible and is expressed at high levels in the nuclei of leukocytes. Variants of this gene have been associated with multiple sclerosis, Crohn's disease, and chronic lymphocytic leukemia. Alternative splicing results in multiple variants. [provided by RefSeq, Aug 2016]
Synonyms:	LYSP100; LYSP100-A; LYSP100-B; MGC126440



[View online »](#)

Product images:



Western blot analysis of extracts of various cell lines, using SP140 antibody ([TA381906]) at 1:1000 dilution. | Secondary antibody: HRP Goat Anti-Rabbit IgG (H+L) at 1:10000 dilution. | Lysates/proteins: 25ug per lane. | Blocking buffer: 3% nonfat dry milk in TBST. | Detection: ECL Basic Kit . | Exposure time: 30s.