

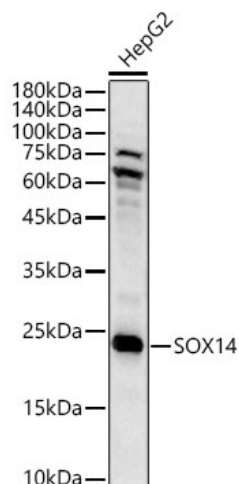
## Product datasheet for **TA381891S**

### SOX14 Rabbit Polyclonal Antibody

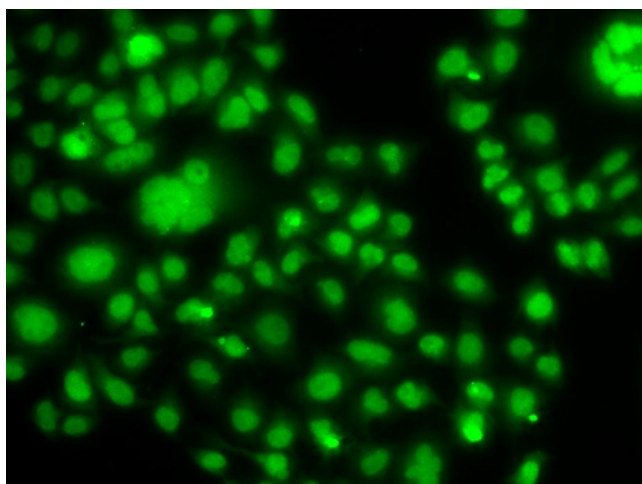
#### Product data:

Product Type:	Primary Antibodies
Applications:	ELISA, ICC/IF, WB
Recommended Dilution:	WB, 1:500 - 1:1000 IF/ICC, 1:50 - 1:200 ELISA, Recommended starting concentration is 1 µg/mL. Please optimize the concentration based on your specific assay requirements.
Reactivity:	Human, Mouse, Rat
Modifications:	Unmodified
Host:	Rabbit
Isotype:	IgG
Clonality:	Polyclonal
Formulation:	Buffer: PBS with 0.02% sodium azide, 50% glycerol, pH 7.3.
Concentration:	lot specific
Purification:	Affinity purification
Conjugation:	Unconjugated
Storage:	Store at -20°C. Avoid freeze / thaw cycles.
Stability:	Shelf life: one year from despatch.
Predicted Protein Size:	26kDa
Gene Name:	SRY-box 14
Database Link:	<a href="#">Entrez Gene 8403 Human O95416</a>
Background:	This intronless gene encodes a member of the SOX (SRY-related HMG-box) family of transcription factors involved in the regulation of embryonic development and in the determination of the cell fate. The encoded protein may act as a transcriptional regulator after forming a protein complex with other proteins. Mutations in this gene are suggested to be responsible for the limb defects associated with blepharophimosis, ptosis, epicanthus inversus syndrome (BPES) and Mobius syndrome.
Synonyms:	MGC119898; MGC119899; SOX28


[View online »](#)

**Product images:**


Western blot analysis of lysates from HepG2 cells



Immunofluorescence analysis of MCF-7 cells using SOX14 Rabbit pAb ([TA381891]), Secondary antibody: Cy3-conjugated Goat anti-Rabbit IgG (H+L) (AS007) at 1:500 dilution.