

## Product datasheet for **TA381887S**

### SOX10 Rabbit Polyclonal Antibody

#### Product data:

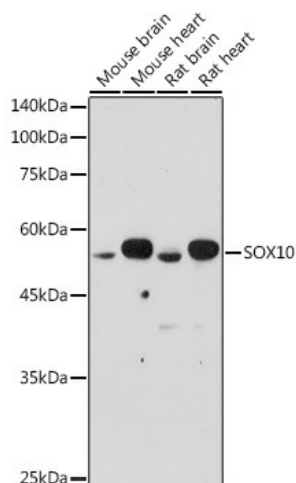
Product Type:	Primary Antibodies
Applications:	ELISA, ICC/IF, IHC, WB
Recommended Dilution:	WB, 1:500 - 1:1000 IHC-P, 1:50 - 1:200 IF/ICC, 1:50 - 1:200 ELISA, Recommended starting concentration is 1 µg/mL. Please optimize the concentration based on your specific assay requirements.
Reactivity:	Human, Mouse, Rat
Modifications:	Unmodified
Host:	Rabbit
Isotype:	IgG
Clonality:	Polyclonal
Formulation:	PBS with 0.05% proclin300, 50% glycerol, pH7.3.
Concentration:	lot specific
Purification:	Affinity purification
Conjugation:	Unconjugated
Storage:	Store at -20°C. Avoid freeze / thaw cycles.
Stability:	Shelf life: one year from despatch.
Predicted Protein Size:	50kDa
Gene Name:	SRY-box 10
Database Link:	<a href="#">Entrez Gene 6663 Human P56693</a>
Background:	This gene encodes a member of the SOX (SRY-related HMG-box) family of transcription factors involved in the regulation of embryonic development and in the determination of the cell fate. The encoded protein may act as a transcriptional activator after forming a protein complex with other proteins. This protein acts as a nucleocytoplasmic shuttle protein and is important for neural crest and peripheral nervous system development. Mutations in this gene are associated with Waardenburg-Shah and Waardenburg-Hirschsprung disease.



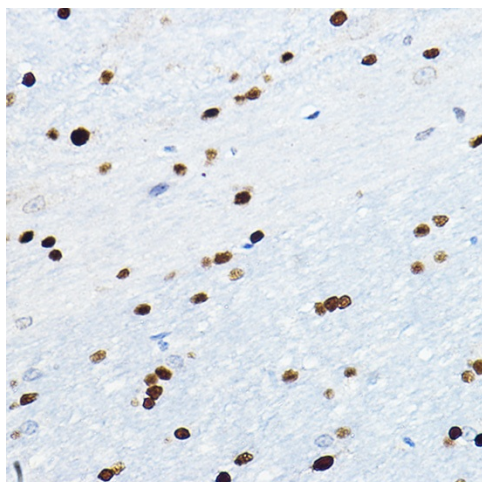
[View online »](#)

**Synonyms:** DOM; MGC15649; OTTHUMP00000195094; WS2E; WS4

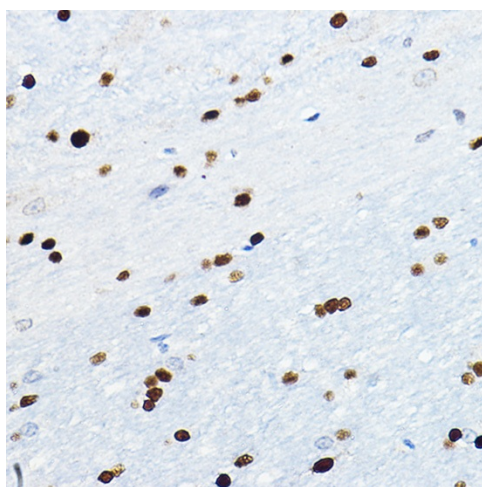
## Product images:



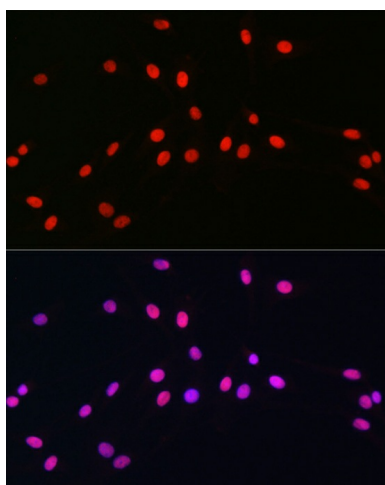
Western blot analysis of various lysates using SOX10 Rabbit pAb ([TA381887]) at 1:600 dilution. Secondary antibody: HRP-conjugated Goat anti-Rabbit IgG (H+L) (AS014) at 1:10000 dilution. Lysates / proteins: 25 µg per lane. Blocking buffer: 3 % nonfat dry milk in TBST. Detection: ECL Basic Kit (RM00020). Exposure time: 20s.



Immunohistochemistry analysis of paraffin-embedded Rat brain using SOX10 Rabbit pAb ([TA381887]) at dilution of 1:100 (40x lens). High pressure antigen retrieval performed with 0.01M Citrate Bufferr (pH 6.0) prior to IHC staining.



Immunohistochemistry analysis of paraffin-embedded Mouse brain using SOX10 Rabbit pAb ([TA381887]) at dilution of 1:100 (40x lens). High pressure antigen retrieval performed with 0.01M Citrate Buffer (pH 6.0) prior to IHC staining.



Immunofluorescence analysis of C6 cells using SOX10 Rabbit pAb ([TA381887]) at dilution of 1:100 (40x lens). Secondary antibody: Cy3-conjugated Goat anti-Rabbit IgG (H+L) (AS007) at 1:500 dilution. Blue: DAPI for nuclear staining.