

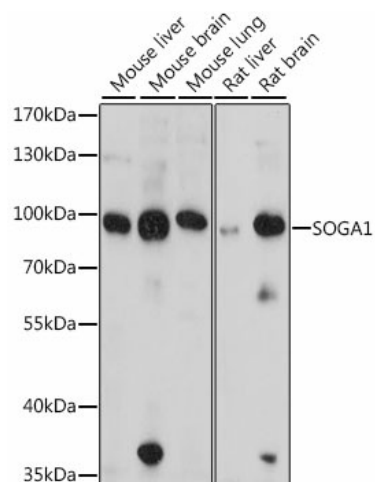
## Product datasheet for **TA381879**

### **C20orf117 (SOGA1) Rabbit Polyclonal Antibody**

#### **Product data:**

Product Type:	Primary Antibodies
Applications:	ELISA, WB
Recommended Dilution:	WB, 1:500 - 1:2000 ELISA, Recommended starting concentration is 1 µg/mL. Please optimize the concentration based on your specific assay requirements.
Reactivity:	Human, Mouse, Rat
Modifications:	Unmodified
Host:	Rabbit
Isotype:	IgG
Clonality:	Polyclonal
Formulation:	Buffer: PBS with 0.01% thimerosal, 50% glycerol, pH7.3.
Concentration:	lot specific
Purification:	Affinity purification
Conjugation:	Unconjugated
Storage:	Store at -20°C. Avoid freeze / thaw cycles.
Stability:	Shelf life: one year from despatch.
Predicted Protein Size:	160kDa
Gene Name:	suppressor of glucose, autophagy associated 1
Database Link:	<a href="#">Entrez Gene 140710 Human O94964</a>
Background:	Predicted to be involved in insulin receptor signaling pathway; negative regulation of gluconeogenesis; and regulation of autophagy. Located in extracellular space.
Synonyms:	C20orf117; KIAA0889; SOGA

[View online »](#)

**Product images:**


Western blot analysis of various lysates using SOGA1 Rabbit pAb (TA381879) at 1:1000 dilution. Secondary antibody: HRP-conjugated Goat anti-Rabbit IgG (H+L) (AS014) at 1:10000 dilution. Lysates/proteins: 25µg per lane. Blocking buffer: 3% nonfat dry milk in TBST. Detection: ECL Basic Kit (RM00020). Exposure time: 15s.