

Product datasheet for **TA381848**

SNRPF Rabbit Polyclonal Antibody

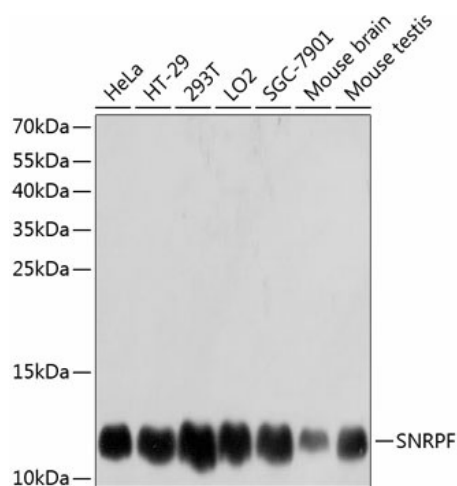
Product data:

Product Type:	Primary Antibodies
Applications:	IHC, WB
Recommended Dilution:	WB,1:500 - 1:2000 IHC,1:50 - 1:200
Reactivity:	Human, Mouse, Rat
Modifications:	Unmodified
Host:	Rabbit
Isotype:	IgG
Clonality:	Polyclonal
Immunogen:	Recombinant fusion protein containing a sequence corresponding to amino acids 1-86 of human SNRPF (NP_003086.1).
Formulation:	Buffer: PBS with 0.02% sodium azide,50% glycerol,pH7.3.
Concentration:	lot specific
Purification:	Affinity purification
Conjugation:	Unconjugated
Storage:	Store at -20°C. Avoid freeze / thaw cycles.
Stability:	Shelf life: one year from despatch.
Predicted Protein Size:	9kDa
Gene Name:	small nuclear ribonucleoprotein polypeptide F
Database Link:	Entrez Gene 6636 Human P62306
Background:	Plays a role in pre-mRNA splicing as a core component of the spliceosomal U1, U2, U4 and U5 small nuclear ribonucleoproteins (snRNPs, the building blocks of the spliceosome. Component of both the pre-catalytic spliceosome B complex and activated spliceosome C complexes. Is also a component of the minor U12 spliceosome. As part of the U7 snRNP it is involved in histone 3'-end processing.
Synonyms:	PBSCF; Sm-F; SmF; snRNP-F



[View online »](#)

Product images:



Western blot analysis of extracts of various cell lines, using SNRPF antibody (TA381848) at 1:3000 dilution. | Secondary antibody: HRP Goat Anti-Rabbit IgG (H+L) at 1:10000 dilution. | Lysates/proteins: 25ug per lane. | Blocking buffer: 3% nonfat dry milk in TBST. | Detection: ECL Basic Kit . | Exposure time: 1s.