

Product datasheet for **TA381841**

SNRPA1 Rabbit Polyclonal Antibody

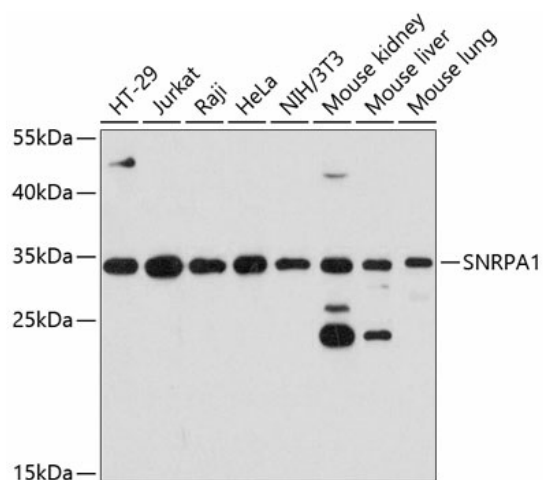
Product data:

Product Type:	Primary Antibodies
Applications:	IHC, WB
Recommended Dilution:	WB, 1:500 - 1:2000 IHC, 1:50 - 1:200
Reactivity:	Human, Mouse, Rat
Modifications:	Unmodified
Host:	Rabbit
Isotype:	IgG
Clonality:	Polyclonal
Immunogen:	Recombinant fusion protein containing a sequence corresponding to amino acids 1-220 of human SNRPA1 (NP_003081.2).
Formulation:	Buffer: PBS with 0.02% sodium azide, 50% glycerol, pH 7.3.
Concentration:	lot specific
Purification:	Affinity purification
Conjugation:	Unconjugated
Storage:	Store at -20°C. Avoid freeze / thaw cycles.
Stability:	Shelf life: one year from despatch.
Predicted Protein Size:	28kDa
Gene Name:	small nuclear ribonucleoprotein polypeptide A'
Database Link:	Entrez Gene 6627 Human P09661
Background:	Involved in pre-mRNA splicing as component of the spliceosome. Associated with sn-RNP U2, where it contributes to the binding of stem loop IV of U2 snRNA.
Synonyms:	SNRPA1



[View online »](#)

Product images:



Western blot analysis of extracts of various cell lines, using SNRPA1 antibody (TA381841) at 1:3000 dilution. | Secondary antibody: HRP Goat Anti-Rabbit IgG (H+L) at 1:10000 dilution. | Lysates/proteins: 25ug per lane. | Blocking buffer: 3% nonfat dry milk in TBST. | Detection: ECL Basic Kit. | Exposure time: 10s.