

Product datasheet for **TA381821S**

SNAP45 (SNAPC2) Rabbit Polyclonal Antibody

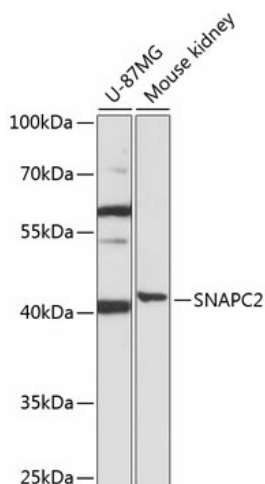
Product data:

Product Type:	Primary Antibodies
Applications:	ELISA, WB
Recommended Dilution:	WB, 1:500 - 1:2000 ELISA, Recommended starting concentration is 1 µg/mL. Please optimize the concentration based on your specific assay requirements.
Reactivity:	Human, Mouse
Modifications:	Unmodified
Host:	Rabbit
Isotype:	IgG
Clonality:	Polyclonal
Formulation:	Buffer: PBS with 0.02% sodium azide, 50% glycerol, pH 7.3.
Concentration:	lot specific
Purification:	Affinity purification
Conjugation:	Unconjugated
Storage:	Store at -20°C. Avoid freeze / thaw cycles.
Stability:	Shelf life: one year from despatch.
Predicted Protein Size:	36kDa
Gene Name:	small nuclear RNA activating complex polypeptide 2
Database Link:	Entrez Gene 6618 Human Q13487
Background:	This gene encodes a subunit of the snRNA-activating protein complex which is associated with the TATA box-binding protein. The encoded protein is necessary for RNA polymerase II and III dependent small-nuclear RNA gene transcription. Alternative splicing results in multiple transcript variants.
Synonyms:	PTFdelta; SNAP45



[View online »](#)

Product images:



Western blot analysis of various lysates using SNAPC2 Rabbit pAb ([TA381821]) at 1:1000 dilution.

Secondary antibody: HRP-conjugated Goat anti-Rabbit IgG (H+L) (AS014) at 1:10000 dilution.

Lysates/proteins: 25µg per lane.

Blocking buffer: 3% nonfat dry milk in TBST.

Detection: ECL Basic Kit (RM00020).

Exposure time: 30s.