

## Product datasheet for **TA381821**

### SNAP45 (SNAPC2) Rabbit Polyclonal Antibody

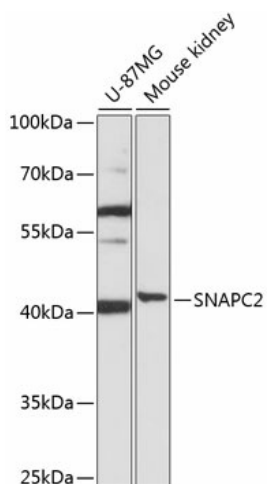
#### Product data:

Product Type:	Primary Antibodies
Applications:	WB
Recommended Dilution:	WB,1:500 - 1:2000
Reactivity:	Human, Mouse
Modifications:	Unmodified
Host:	Rabbit
Isotype:	IgG
Clonality:	Polyclonal
Immunogen:	Recombinant fusion protein containing a sequence corresponding to amino acids 20-100 of human SNAPC2 (NP_003074.1).
Formulation:	Buffer: PBS with 0.02% sodium azide,50% glycerol,pH7.3.
Concentration:	lot specific
Purification:	Affinity purification
Conjugation:	Unconjugated
Storage:	Store at -20°C. Avoid freeze / thaw cycles.
Stability:	Shelf life: one year from despatch.
Predicted Protein Size:	35kDa
Gene Name:	small nuclear RNA activating complex polypeptide 2
Database Link:	<a href="#">Entrez Gene 6618 Human Q13487</a>
Background:	This gene encodes a subunit of the snRNA-activating protein complex which is associated with the TATA box-binding protein. The encoded protein is necessary for RNA polymerase II and III dependent small-nuclear RNA gene transcription. Alternative splicing results in multiple transcript variants.
Synonyms:	PTFdelta; SNAP45



[View online »](#)

## Product images:



Western blot analysis of extracts of various cell lines, using SNAPC2 antibody (TA381821) at 1:1000 dilution. | Secondary antibody: HRP Goat Anti-Rabbit IgG (H+L) at 1:10000 dilution. | Lysates/proteins: 25ug per lane. | Blocking buffer: 3% nonfat dry milk in TBST. | Detection: ECL Basic Kit . | Exposure time: 30s.