

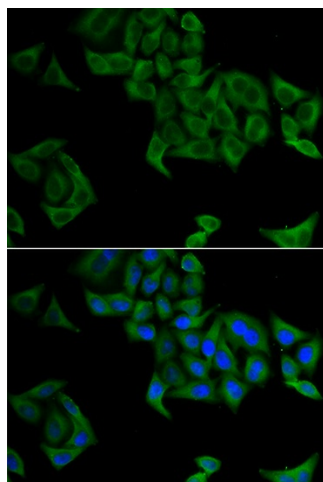
Product datasheet for **TA381810S**

SMYD5 Rabbit Polyclonal Antibody

Product data:

Product Type:	Primary Antibodies
Applications:	ELISA, ICC/IF, WB
Recommended Dilution:	WB, 1:500 - 1:2000 IF/ICC, 1:50 - 1:200 ELISA, Recommended starting concentration is 1 µg/mL. Please optimize the concentration based on your specific assay requirements.
Reactivity:	Human, Mouse
Modifications:	Unmodified
Host:	Rabbit
Isotype:	IgG
Clonality:	Polyclonal
Formulation:	Buffer: PBS with 0.02% sodium azide, 50% glycerol, pH 7.3.
Concentration:	lot specific
Purification:	Affinity purification
Conjugation:	Unconjugated
Storage:	Store at -20°C. Avoid freeze / thaw cycles.
Stability:	Shelf life: one year from despatch.
Predicted Protein Size:	47kDa
Gene Name:	SMYD family member 5
Database Link:	Entrez Gene 10322 Human Q6GMV2
Background:	Predicted to enable histone methyltransferase activity (H4-K20 specific). Involved in negative regulation of transposition and regulation of stem cell differentiation.
Synonyms:	NN8-4AG; RAI15; RRG1; ZMYND23

[View online »](#)

Product images:

Immunofluorescence analysis of A549 cells using SMYD5 Rabbit pAb ([TA381810]). Secondary antibody: Cy3-conjugated Goat anti-Rabbit IgG (H+L) (AS007) at 1:500 dilution. Blue: DAPI for nuclear staining.