

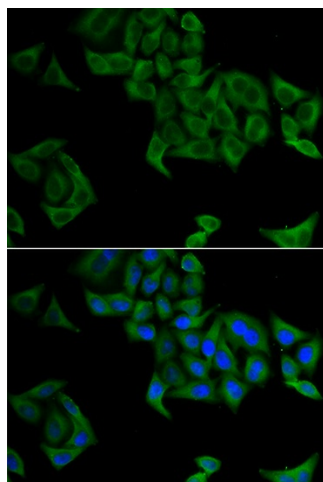
## Product datasheet for **TA381810**

### SMYD5 Rabbit Polyclonal Antibody

#### Product data:

|                         |  |
|-------------------------|--|
| Product Type:           | Primary Antibodies   |
| Applications:           | ELISA, ICC/IF, WB  |
| Recommended Dilution:   | WB, 1:500 - 1:2000<br>IF/ICC, 1:50 - 1:200<br>ELISA, Recommended starting concentration is 1 µg/mL. Please optimize the concentration based on your specific assay requirements. |
| Reactivity:             | Human, Mouse   |
| Modifications:          | Unmodified   |
| Host:                   | Rabbit   |
| Isotype:                | IgG  |
| Clonality:              | Polyclonal   |
| Formulation:            | Buffer: PBS with 0.02% sodium azide, 50% glycerol, pH 7.3.   |
| Concentration:          | lot specific   |
| Purification:           | Affinity purification  |
| Conjugation:            | Unconjugated   |
| Storage:                | Store at -20°C. Avoid freeze / thaw cycles.  |
| Stability:              | Shelf life: one year from despatch.  |
| Predicted Protein Size: | 47kDa  |
| Gene Name:              | SMYD family member 5   |
| Database Link:          | <a href="#">Entrez Gene 10322 Human Q6GMV2</a>   |
| Background:             | Predicted to enable histone methyltransferase activity (H4-K20 specific). Involved in negative regulation of transposition and regulation of stem cell differentiation.          |
| Synonyms:               | NN8-4AG; RAI15; RRG1; ZMYND23  |


[View online »](#)

**Product images:**

Immunofluorescence analysis of A549 cells using SMYD5 Rabbit pAb (TA381810). Secondary antibody: Cy3-conjugated Goat anti-Rabbit IgG (H+L) (AS007) at 1:500 dilution. Blue: DAPI for nuclear staining.