

## Product datasheet for **TA381809**

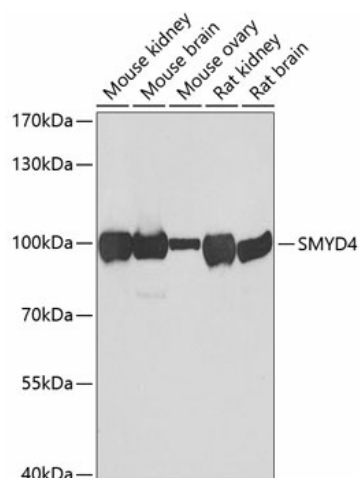
### SMYD4 Rabbit Polyclonal Antibody

#### Product data:

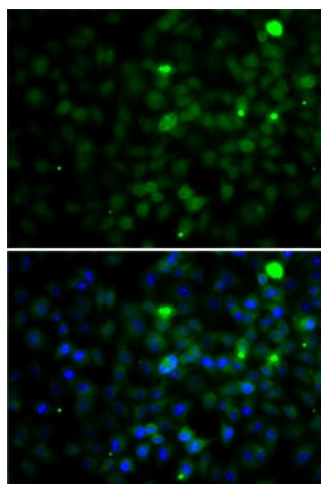
Product Type:	Primary Antibodies
Applications:	ICC/IF, IHC, IP, WB
Recommended Dilution:	WB,1:500 - 1:2000 IHC,1:50 - 1:200 IF,1:50 - 1:100
Reactivity:	Human, Mouse, Rat
Modifications:	Unmodified
Host:	Rabbit
Isotype:	IgG
Clonality:	Polyclonal
Immunogen:	Recombinant fusion protein containing a sequence corresponding to amino acids 1-260 of human SMYD4 (NP_443160.2).
Formulation:	Buffer: PBS with 0.02% sodium azide,50% glycerol,pH7.3.
Concentration:	lot specific
Purification:	Affinity purification
Conjugation:	Unconjugated
Storage:	Store at -20°C. Avoid freeze / thaw cycles.
Stability:	Shelf life: one year from despatch.
Predicted Protein Size:	89kDa
Gene Name:	SET and MYND domain containing 4
Database Link:	<a href="#">Entrez Gene 114826 Human Q8IYR2</a>
Background:	Plays a critical role in cardiac development. Acts as a key epigenetic regulator of gene expression during cardiac development via its dual activities as a methyltransferase and negative regulator of HDAC1 (By similarity).
Synonyms:	KIAA1936; ZMYND21



[View online »](#)

**Product images:**

Western blot analysis of extracts of various cell lines, using SMYD4 antibody (TA381809) at 1:1000 dilution. | Secondary antibody: HRP Goat Anti-Rabbit IgG (H+L) at 1:10000 dilution. | Lysates/proteins: 25ug per lane. | Blocking buffer: 3% nonfat dry milk in TBST. | Detection: ECL Basic Kit. | Exposure time: 60s.



Immunofluorescence analysis of A-549 cells using SMYD4 antibody (TA381809). Blue: DAPI for nuclear staining.