

Product datasheet for **TA381808S**

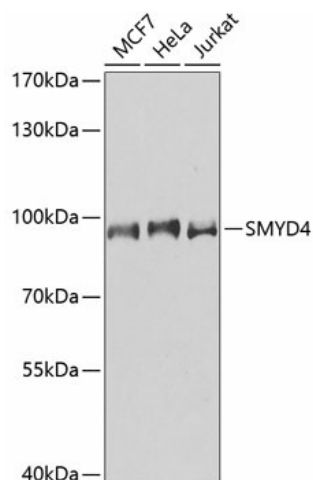
SMYD4 Rabbit Polyclonal Antibody

Product data:

Product Type:	Primary Antibodies
Applications:	ELISA, ICC/IF, IP, WB
Recommended Dilution:	WB, 1:500 - 1:2000 IF/ICC, 1:50 - 1:200 IP, 0.5µg-4µg antibody for 200µg-400µg extracts of whole cells ELISA, Recommended starting concentration is 1 µg/mL. Please optimize the concentration based on your specific assay requirements.
Reactivity:	Human, Mouse
Modifications:	Unmodified
Host:	Rabbit
Isotype:	IgG
Clonality:	Polyclonal
Formulation:	PBS with 0.09% Sodium azide, 50% glycerol, pH7.3.
Concentration:	lot specific
Purification:	Affinity purification
Conjugation:	Unconjugated
Storage:	Store at -20°C. Avoid freeze / thaw cycles.
Stability:	Shelf life: one year from despatch.
Predicted Protein Size:	89kDa
Gene Name:	SET and MYND domain containing 4
Database Link:	Entrez Gene 114826 Human Q8IYR2
Background:	Predicted to enable metal ion binding activity and methyltransferase activity. Involved in heart development. Predicted to be located in cytoplasm and nucleus.
Synonyms:	KIAA1936; ZMYND21



[View online »](#)

Product images:


Western blot analysis of various lysates using SMYD4 Rabbit pAb ([TA381808]) at 1:1000 dilution.

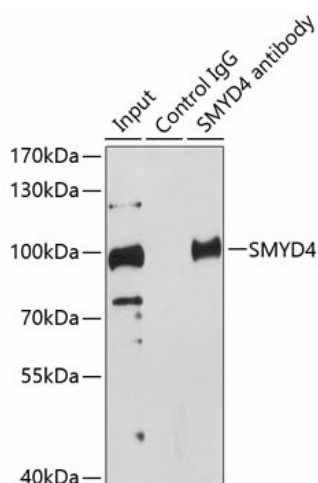
Secondary antibody: HRP-conjugated Goat anti-Rabbit IgG (H+L) (AS014) at 1:10000 dilution.

Lysates/proteins: 25µg per lane.

Blocking buffer: 3% nonfat dry milk in TBST.

Detection: ECL Basic Kit (RM00020).

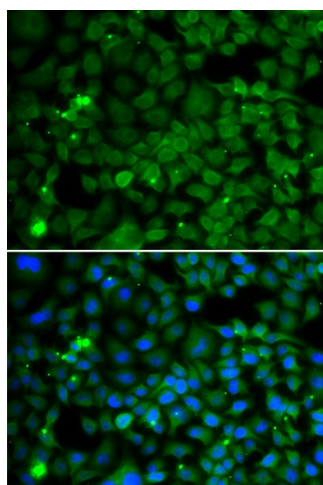
Exposure time: 60s.



Immunoprecipitation analysis of 200 µg extracts of HeLa cells using 1 µg SMYD4 antibody ([TA381808]).

Western blot was performed from the immunoprecipitate using SMYD4 antibody ([TA381808]) at a dilution of 1:500. Detection:

ECL Enhanced Kit (RM00021). Exposure time: 20s.



Immunofluorescence analysis of MCF-7 cells using SMYD4 Rabbit pAb ([TA381808]). Secondary antibody: Cy3-conjugated Goat anti-Rabbit IgG (H+L) (AS007) at 1:500 dilution. Blue: DAPI for nuclear staining.