

## Product datasheet for **TA381808**

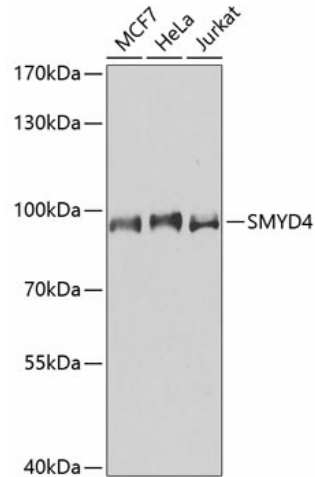
### SMYD4 Rabbit Polyclonal Antibody

#### Product data:

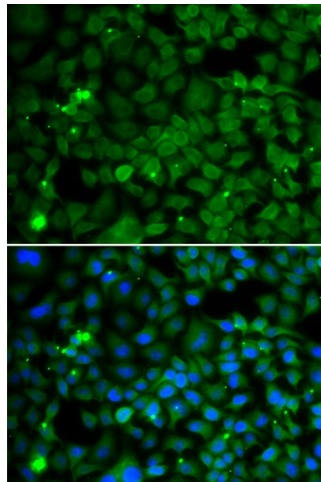
Product Type:	Primary Antibodies
Applications:	ICC/IF, IP, WB
Recommended Dilution:	WB,1:500 - 1:2000 IF,1:50 - 1:200 IP,1:20 - 1:50
Reactivity:	Human, Mouse
Modifications:	Unmodified
Host:	Rabbit
Isotype:	IgG
Clonality:	Polyclonal
Immunogen:	Recombinant fusion protein containing a sequence corresponding to amino acids 1-260 of human SMYD4 (NP_443160.2).
Formulation:	PBS with 0.09% Sodium azide,50% glycerol,pH7.3.
Concentration:	lot specific
Purification:	Affinity purification
Conjugation:	Unconjugated
Storage:	Store at -20°C. Avoid freeze / thaw cycles.
Stability:	Shelf life: one year from despatch.
Predicted Protein Size:	89kDa
Gene Name:	SET and MYND domain containing 4
Database Link:	<a href="#">Entrez Gene 114826 Human Q8IYR2</a>
Background:	Plays a critical role in cardiac development. Acts as a key epigenetic regulator of gene expression during cardiac development via its dual activities as a methyltransferase and negative regulator of HDAC1 (By similarity).
Synonyms:	KIAA1936; ZMYND21



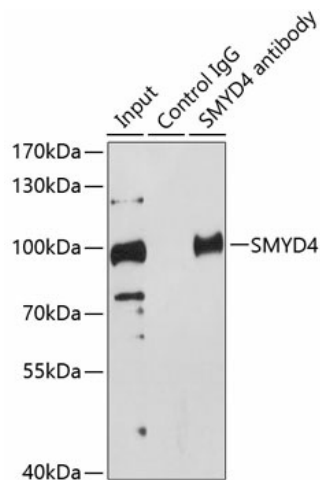
[View online »](#)

**Product images:**


Western blot analysis of extracts of various cell lines, using SMYD4 antibody (TA381808) at 1:1000 dilution. | Secondary antibody: HRP Goat Anti-Rabbit IgG (H+L) at 1:10000 dilution. | Lysates/proteins: 25ug per lane. | Blocking buffer: 3% nonfat dry milk in TBST. | Detection: ECL Basic Kit . | Exposure time: 60s.



Immunofluorescence analysis of MCF-7 cells using SMYD4 antibody (TA381808). Blue: DAPI for nuclear staining.



Immunoprecipitation analysis of 200ug extracts of HeLa cells using 1ug SMYD4 antibody (TA381808). Western blot was performed from the immunoprecipitate using SMYD4 antibody (TA381808) at a dilution of 1:500. \_\_\_\_Detection: ECL Enhanced Kit . \_Exposure time: 20s.

