

Product datasheet for **TA381803**

SMYD1 Rabbit Polyclonal Antibody

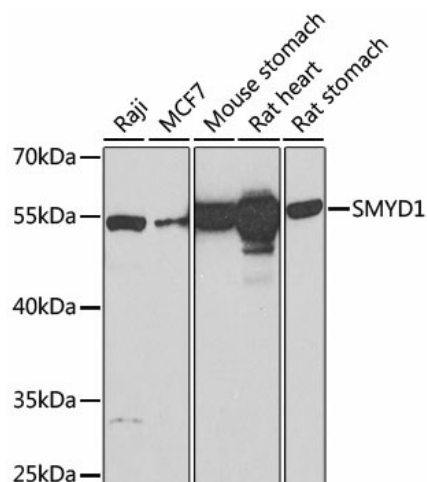
Product data:

Product Type:	Primary Antibodies
Applications:	ICC/IF, IHC, WB
Recommended Dilution:	WB,1:200 - 1:2000 IHC,1:20 - 1:200 IF,1:20 - 1:100
Reactivity:	Human, Mouse, Rat
Modifications:	Unmodified
Host:	Rabbit
Isotype:	IgG
Clonality:	Polyclonal
Immunogen:	Recombinant fusion protein containing a sequence corresponding to amino acids 1-350 of human SMYD1 (NP_938015.1).
Formulation:	Buffer: PBS with 0.02% sodium azide,50% glycerol,pH7.3.
Concentration:	lot specific
Purification:	Affinity purification
Conjugation:	Unconjugated
Storage:	Store at -20°C. Avoid freeze / thaw cycles.
Stability:	Shelf life: one year from despatch.
Predicted Protein Size:	56kDa
Gene Name:	SET and MYND domain containing 1
Database Link:	Entrez Gene 150572 Human Q8NB12
Background:	Methylates histone H3 at 'Lys-4' (H3K4me, seems able to perform both mono-, di-, and trimethylation. Acts as a transcriptional repressor. Essential for cardiomyocyte differentiation and cardiac morphogenesis.
Synonyms:	BOP; ZMYND18; ZMYND22

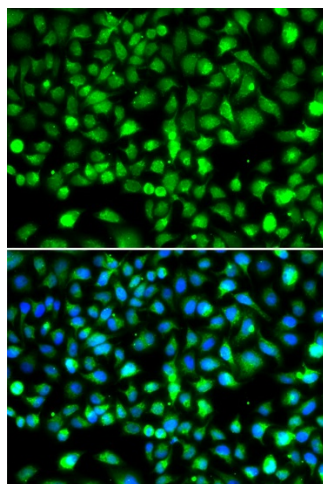


[View online »](#)

Product images:



Western blot analysis of extracts of various cell lines, using SMYD1 Antibody (TA381803) at 1:1000 dilution. | Secondary antibody: HRP Goat Anti-Rabbit IgG (H+L) at 1:10000 dilution. | Lysates/proteins: 25ug per lane. | Blocking buffer: 3% nonfat dry milk in TBST. | Detection: ECL Basic Kit . | Exposure time: 60s.



Immunofluorescence analysis of MCF-7 cells using SMYD1 antibody (TA381803). Blue: DAPI for nuclear staining.