

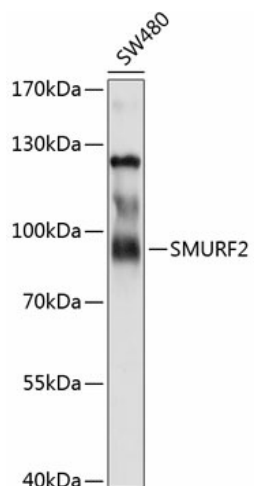
Product datasheet for **TA381802S**

SMURF 2 (SMURF2) Rabbit Polyclonal Antibody

Product data:

Product Type:	Primary Antibodies
Applications:	ELISA, WB
Recommended Dilution:	WB, 1:1000 - 1:2000 ELISA, Recommended starting concentration is 1 µg/mL. Please optimize the concentration based on your specific assay requirements.
Reactivity:	Human
Modifications:	Unmodified
Host:	Rabbit
Isotype:	IgG
Clonality:	Polyclonal
Formulation:	Buffer: PBS with 0.02% sodium azide, 50% glycerol, pH 7.3.
Concentration:	lot specific
Purification:	Affinity purification
Conjugation:	Unconjugated
Storage:	Store at -20°C. Avoid freeze / thaw cycles.
Stability:	Shelf life: one year from despatch.
Predicted Protein Size:	86kDa
Gene Name:	SMAD specific E3 ubiquitin protein ligase 2
Database Link:	Entrez Gene 64750 Human Q9HAU4
Background:	Enables SMAD binding activity; identical protein binding activity; and ubiquitin-protein transferase activity. Involved in negative regulation of transforming growth factor beta receptor signaling pathway; positive regulation of trophoblast cell migration; and ubiquitin-dependent SMAD protein catabolic process. Located in nuclear speck. Part of ubiquitin ligase complex.
Synonyms:	DKFZp686F0270; hSMURF2; MGC138150

[View online »](#)

Product images:

Western blot analysis of lysates from SW480 cells