

Product datasheet for **TA381800**

SMU1 Rabbit Polyclonal Antibody

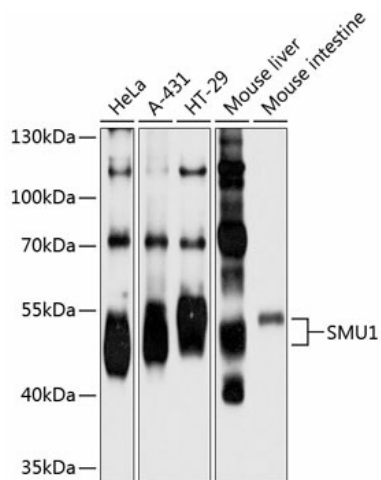
Product data:

Product Type:	Primary Antibodies
Applications:	WB
Recommended Dilution:	WB,1:200 - 1:2000
Reactivity:	Human, Mouse, Rat
Modifications:	Unmodified
Host:	Rabbit
Isotype:	IgG
Clonality:	Polyclonal
Immunogen:	Recombinant fusion protein containing a sequence corresponding to amino acids 1-220 of human SMU1 (NP_060695.2).
Formulation:	Buffer: PBS with 0.02% sodium azide,50% glycerol,pH7.3.
Concentration:	lot specific
Purification:	Affinity purification
Conjugation:	Unconjugated
Storage:	Store at -20°C. Avoid freeze / thaw cycles.
Stability:	Shelf life: one year from despatch.
Predicted Protein Size:	39kDa/57kDa
Gene Name:	DNA replication regulator and spliceosomal factor
Database Link:	Entrez Gene 55234 Human Q2TAY7
Background:	Involved in pre-mRNA splicing as a component of the spliceosome. Regulates alternative splicing of the HSPG2 pre-mRNA (By similarity. Required for normal accumulation of IK. Required for normal mitotic spindle assembly and normal progress through mitosis (By similarity.
Synonyms:	BWD; DKFZp761L0916; FLJ10805; FLJ10870; FLJ11970; fSAP57; MGC117363; RP11-54K16.3; SMU-1



[View online »](#)

Product images:



Western blot analysis of extracts of various cell lines, using SMU1 antibody (TA381800) at 1:1000 dilution. | Secondary antibody: HRP Goat Anti-Rabbit IgG (H+L) at 1:10000 dilution. | Lysates/proteins: 25ug per lane. | Blocking buffer: 3% nonfat dry milk in TBST. | Detection: ECL Basic Kit . | Exposure time: 10s.