

Product datasheet for **TA381789S**

Smoothened (SMO) Rabbit Polyclonal Antibody

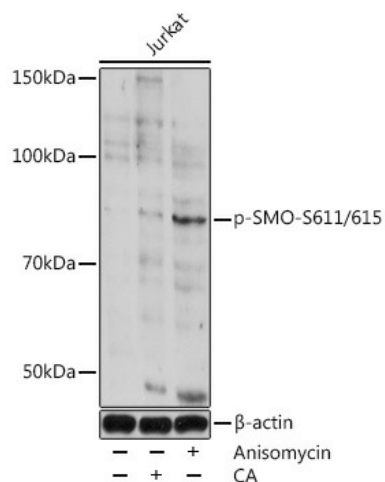
Product data:

Product Type:	Primary Antibodies
Applications:	WB
Recommended Dilution:	WB,1:500 - 1:1000
Reactivity:	Human
Modifications:	Phospho S611/615
Host:	Rabbit
Isotype:	IgG
Clonality:	Polyclonal
Immunogen:	A synthetic phosphorylated peptide around S611/615 of human SMO.
Formulation:	Buffer: PBS with 0.02% sodium azide,50% glycerol,pH7.3.
Concentration:	lot specific
Purification:	Affinity purification
Conjugation:	Unconjugated
Storage:	Store at -20°C. Avoid freeze / thaw cycles.
Stability:	Shelf life: one year from despatch.
Predicted Protein Size:	86kDa
Gene Name:	smoothened, frizzled class receptor
Database Link:	Entrez Gene 6608 Human Q99835
Background:	The protein encoded by this gene is a G protein-coupled receptor that interacts with the patched protein, a receptor for hedgehog proteins. The encoded protein transduces signals to other proteins after activation by a hedgehog protein/patched protein complex.
Synonyms:	Gx; SMOH; smoothened



[View online »](#)

Product images:



Western blot analysis of extracts of Jurkat cells, using Phospho-SMO-S611/615 antibody ([TA381789]) at 1:1000 dilution. Jurkat cells were treated by Calyculin A (100 nM) at 37°C for 30 minutes. Jurkat cells were treated by Anisomycin (25 ug/mL) at 37°C for 20 minutes. | Secondary antibody: HRP Goat Anti-Rabbit IgG (H+L) at 1:10000 dilution. | Lysates/proteins: 25ug per lane. | Blocking buffer: 3% BSA. | Detection: ECL Basic Kit. | Exposure time: 60s.