

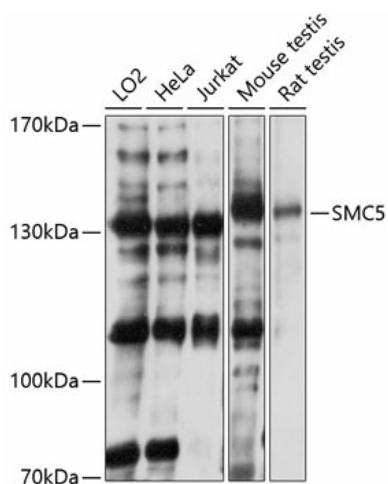
Product datasheet for TA381774S

SMC5 Rabbit Polyclonal Antibody

Product data:

Product Type:	Primary Antibodies
Applications:	ELISA, WB
Recommended Dilution:	WB, 1:1000 - 1:3000 ELISA, Recommended starting concentration is 1 µg/mL. Please optimize the concentration based on your specific assay requirements.
Reactivity:	Human, Mouse, Rat
Modifications:	Unmodified
Host:	Rabbit
Isotype:	IgG
Clonality:	Polyclonal
Formulation:	Buffer: PBS with 0.02% sodium azide, 50% glycerol, pH 7.3.
Concentration:	lot specific
Purification:	Affinity purification
Conjugation:	Unconjugated
Storage:	Store at -20°C. Avoid freeze / thaw cycles.
Stability:	Shelf life: one year from despatch.
Predicted Protein Size:	129kDa
Gene Name:	structural maintenance of chromosomes 5
Database Link:	Entrez Gene 23137 Human Q8IY18
Background:	Predicted to enable ATP binding activity. Involved in several processes, including DNA recombination; cellular senescence; and positive regulation of maintenance of mitotic sister chromatid cohesion. Located in cell junction; chromosome; and nuclear body. Part of Smc5-Smc6 complex.
Synonyms:	hSMC5; KIAA0594; SMC5L1


[View online »](#)

Product images:

Western blot analysis of various lysates using SMC5 Rabbit pAb ([TA381774]) at 1:3000 dilution. Secondary antibody: HRP-conjugated Goat anti-Rabbit IgG (H+L) (AS014) at 1:10000 dilution. Lysates/proteins: 25µg per lane. Blocking buffer: 3% nonfat dry milk in TBST. Detection: ECL Basic Kit (RM00020). Exposure time: 10s.