

## Product datasheet for **TA381767S**

### SMARCE1 Rabbit Polyclonal Antibody

#### Product data:

Product Type:	Primary Antibodies
Applications:	ICC/IF, IP, WB
Recommended Dilution:	WB,1:500 - 1:2000 IHC,1:50 - 1:200 IF,1:50 - 1:200 IP,1:20 - 1:50
Reactivity:	Human, Mouse, Rat
Modifications:	Unmodified
Host:	Rabbit
Isotype:	IgG
Clonality:	Polyclonal
Immunogen:	Recombinant fusion protein containing a sequence corresponding to amino acids 1-411 of human BAF57/BAF57/SMARCE1 (NP_003070.3).
Formulation:	Buffer: PBS with 0.02% sodium azide,50% glycerol,pH7.3.
Concentration:	lot specific
Purification:	Affinity purification
Conjugation:	Unconjugated
Storage:	Store at -20°C. Avoid freeze / thaw cycles.
Stability:	Shelf life: one year from despatch.
Predicted Protein Size:	34kDa/37kDa/39kDa/41kDa/42kDa/46kDa
Gene Name:	SWI/SNF related, matrix associated, actin dependent regulator of chromatin, subfamily e, member 1
Database Link:	<a href="#">Entrez Gene 6605 Human Q969G3</a>



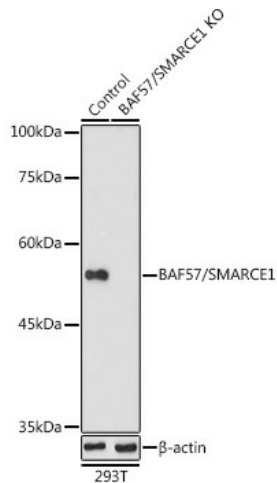
[View online »](#)

**Background:**

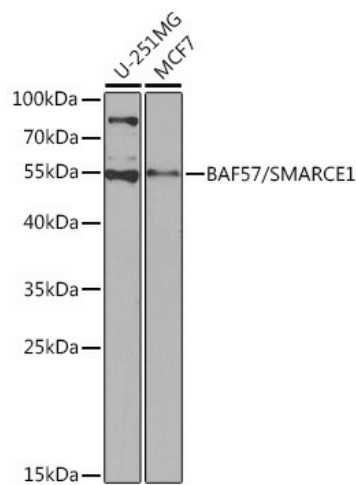
The protein encoded by this gene is part of the large ATP-dependent chromatin remodeling complex SWI/SNF, which is required for transcriptional activation of genes normally repressed by chromatin. The encoded protein, either alone or when in the SWI/SNF complex, can bind to 4-way junction DNA, which is thought to mimic the topology of DNA as it enters or exits the nucleosome. The protein contains a DNA-binding HMG domain, but disruption of this domain does not abolish the DNA-binding or nucleosome-displacement activities of the SWI/SNF complex. Unlike most of the SWI/SNF complex proteins, this protein has no yeast counterpart.

**Synonyms:**

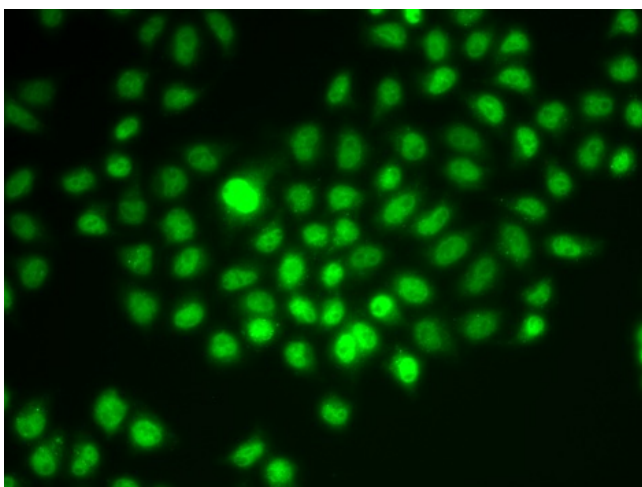
BAF57

**Product images:**


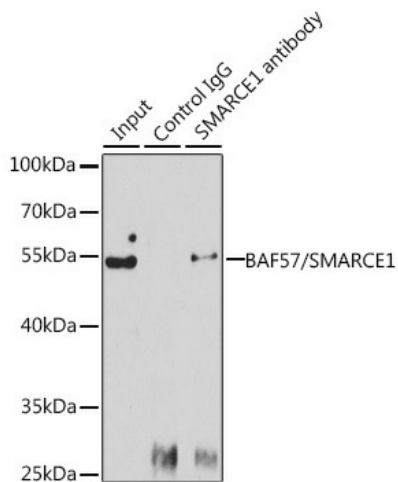
Western blot analysis of extracts from normal (control) and BAF57/SMARCE1 knockout (KO) 293T cells, using BAF57/SMARCE1 antibody ([TA381767]) at 1:1000 dilution. |Secondary antibody: HRP Goat Anti-Rabbit IgG (H+L) at 1:10000 dilution. |Lysates/proteins: 25ug per lane. |Blocking buffer: 3% nonfat dry milk in TBST. |Detection: ECL Enhanced Kit . |Exposure time: 180s.



Western blot analysis of extracts of various cell lines, using BAF57/BAF57/SMARCE1 antibody ([TA381767]) at 1:1000 dilution. |Secondary antibody: HRP Goat Anti-Rabbit IgG (H+L) at 1:10000 dilution. |Lysates/proteins: 25ug per lane. |Blocking buffer: 3% nonfat dry milk in TBST. |Detection: ECL Basic Kit . |Exposure time: 90s.



Immunofluorescence analysis of HeLa cells using BAF57/BAF57/SMARCE1 antibody ([TA381767]).



Immunoprecipitation analysis of 150ug extracts of Jurkat cells using 3ug BAF57/BAF57/SMARCE1 antibody ([TA381767]). Western blot was performed from the immunoprecipitate using BAF57/BAF57/SMARCE1 antibody ([TA381767]) at a dilution of 1:1000.