

Product datasheet for **TA381765**

SMARCD2 Rabbit Polyclonal Antibody

Product data:

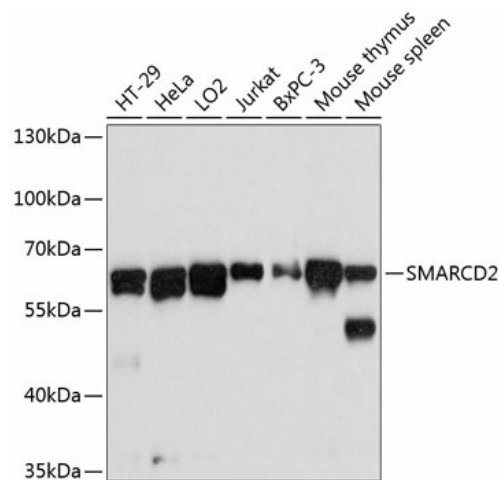
Product Type:	Primary Antibodies
Applications:	IHC, WB
Recommended Dilution:	WB, 1:500 - 1:2000 IHC, 1:50 - 1:200
Reactivity:	Human, Mouse, Rat
Modifications:	Unmodified
Host:	Rabbit
Isotype:	IgG
Clonality:	Polyclonal
Immunogen:	Recombinant fusion protein containing a sequence corresponding to amino acids 454-531 of human SMARCD2 (NP_001091896.1).
Formulation:	PBS with 0.05% proclin300, 50% glycerol, pH 7.3.
Concentration:	lot specific
Purification:	Affinity purification
Conjugation:	Unconjugated
Storage:	Store at -20°C. Avoid freeze / thaw cycles.
Stability:	Shelf life: one year from despatch.
Predicted Protein Size:	55kDa/57kDa/58kDa
Gene Name:	SWI/SNF related, matrix associated, actin dependent regulator of chromatin, subfamily d, member 2
Database Link:	Entrez Gene 6603 Human Q92925
Background:	The protein encoded by this gene is a member of the SWI/SNF family of proteins, whose members display helicase and ATPase activities and which are thought to regulate transcription of certain genes by altering the chromatin structure around those genes. The encoded protein is part of the large ATP-dependent chromatin remodeling complex SNF/SWI and has sequence similarity to the yeast Swp73 protein. Alternatively spliced transcript variants encoding different isoforms have been found for this gene.



[View online »](#)

Synonyms: BAF60B; CRACD2; PRO2451; Rsc6p

Product images:



Western blot analysis of extracts of various cell lines, using SMARCD2 antibody (TA381765) at 1:3000 dilution. | Secondary antibody: HRP Goat Anti-Rabbit IgG (H+L) at 1:10000 dilution. | Lysates/proteins: 25ug per lane. | Blocking buffer: 3% nonfat dry milk in TBST. | Detection: ECL Basic Kit . | Exposure time: 30s.