

## Product datasheet for **TA381764S**

### Smarcd1 Rabbit Polyclonal Antibody

#### Product data:

Product Type:	Primary Antibodies
Applications:	ELISA, IHC, WB
Recommended Dilution:	WB, 1:500 - 1:2000 IHC-P, 1:50 - 1:200 ELISA, Recommended starting concentration is 1 µg/mL. Please optimize the concentration based on your specific assay requirements.
Reactivity:	Human, Mouse, Rat
Modifications:	Unmodified
Host:	Rabbit
Isotype:	IgG
Clonality:	Polyclonal
Formulation:	Buffer: PBS with 0.02% sodium azide, 50% glycerol, pH 7.3.
Concentration:	lot specific
Purification:	Affinity purification
Conjugation:	Unconjugated
Storage:	Store at -20°C. Avoid freeze / thaw cycles.
Stability:	Shelf life: one year from despatch.
Predicted Protein Size:	58kDa
Gene Name:	SWI/SNF related, matrix associated, actin dependent regulator of chromatin, subfamily d, member 1
Database Link:	<a href="#">Entrez Gene 83797 Mouse</a> <a href="#">Q96GM5</a>



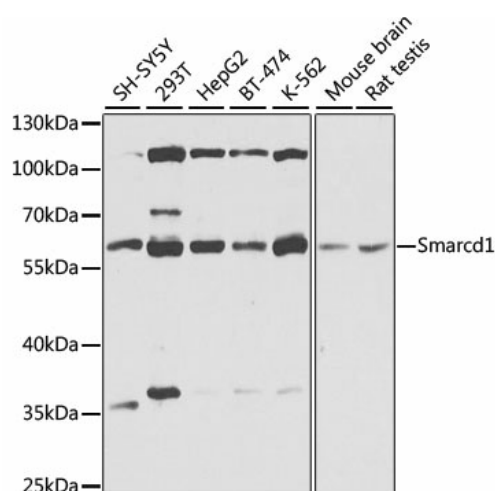
[View online »](#)

**Background:**

Predicted to enable several functions, including chromatin binding activity; molecular adaptor activity; and transcription coregulator activity. Predicted to be involved in epigenetic maintenance of chromatin in transcription-competent conformation; nucleosome disassembly; and regulation of transcription by RNA polymerase II. Predicted to act upstream of or within chromatin organization and nervous system development. Part of SWI/SNF complex; nBAF complex; and npBAF complex. Is expressed in several structures, including central nervous system; dorsal root ganglion; early conceptus; genitourinary system; and retina layer. Human ortholog(s) of this gene implicated in Coffin-Siris syndrome. Orthologous to human SMARCD1 (SWI/SNF related, matrix associated, actin dependent regulator of chromatin, subfamily d, member 1).

**Synonyms:**

BAF60A; CRACD1; Rsc6p

**Product images:**


Western blot analysis of various lysates using BAF60a Rabbit pAb ([TA381764]) at 1:1000 dilution.

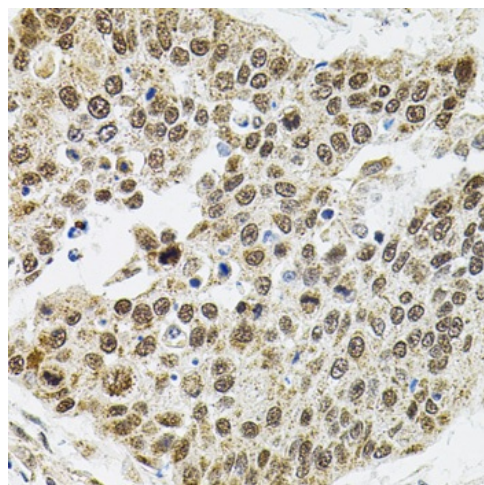
Secondary antibody: HRP-conjugated Goat anti-Rabbit IgG (H+L) (AS014) at 1:10000 dilution.

Lysates/proteins: 25µg per lane.

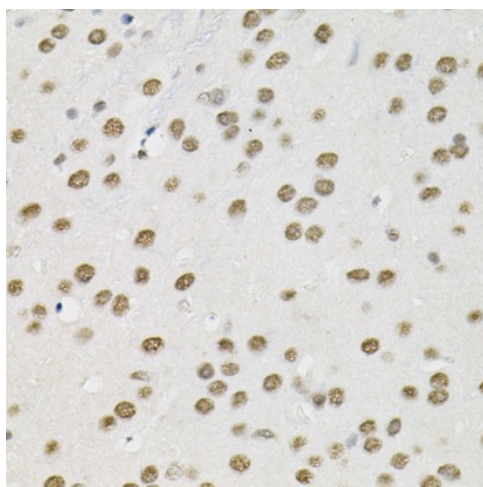
Blocking buffer: 3% nonfat dry milk in TBST.

Detection: ECL Basic Kit (RM00020).

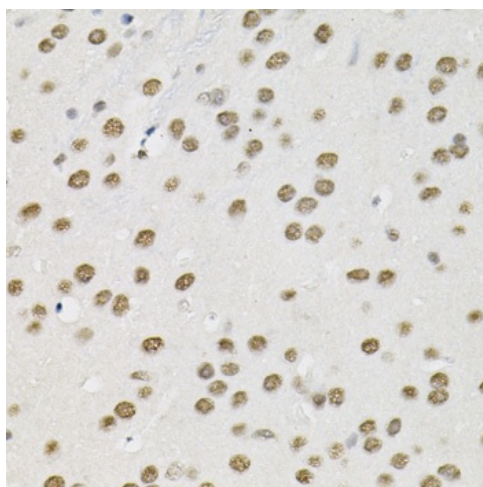
Exposure time: 15s.



Immunohistochemistry analysis of paraffin-embedded Rat brain using BAF60a Rabbit pAb ([TA381764]) (40x lens). Microwave antigen retrieval performed with 0.01M PBS Buffer (pH 7.2) prior to IHC staining.



Immunohistochemistry analysis of paraffin-embedded Human lung cancer using BAF60a Rabbit pAb ([TA381764]) (40x lens). Microwave antigen retrieval performed with 0.01M PBS Buffer (pH 7.2) prior to IHC staining.



Immunohistochemistry analysis of paraffin-embedded Mouse brain using BAF60a Rabbit pAb ([TA381764]) at dilution of 1:100 (40x lens). Microwave antigen retrieval performed with 0.01M PBS Buffer (pH 7.2) prior to IHC staining.