

## Product datasheet for TA381735

### SLU7 Rabbit Polyclonal Antibody

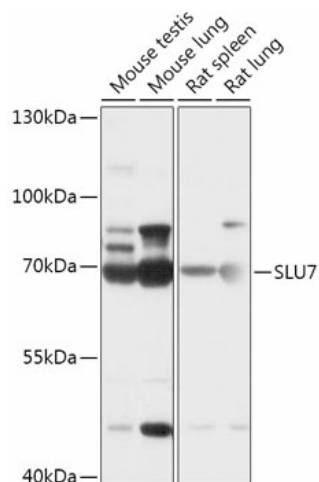
#### Product data:

|                       |  |
|-----------------------|--|
| Product Type:         | Primary Antibodies   |
| Applications:         | WB   |
| Recommended Dilution: | WB,1:500 - 1:2000  |
| Reactivity:           | Human, Mouse, Rat  |
| Modifications:        | Unmodified   |
| Host:                 | Rabbit   |
| Isotype:              | IgG  |
| Clonality:            | Polyclonal   |
| Immunogen:            | Recombinant fusion protein containing a sequence corresponding to amino acids 1-300 of human SLU7 (NP_006416.3).   |
| Formulation:          | Buffer: PBS with 0.02% sodium azide,50% glycerol,pH7.3.  |
| Concentration:        | lot specific   |
| Purification:         | Affinity purification  |
| Conjugation:          | Unconjugated   |
| Storage:              | Store at -20°C. Avoid freeze / thaw cycles.  |
| Stability:            | Shelf life: one year from despatch.  |
| Gene Name:            | SLU7 homolog, splicing factor  |
| Database Link:        | <a href="#">Entrez Gene 10569 Human O95391</a>   |
| Background:           | Pre-mRNA splicing occurs in two sequential transesterification steps. The protein encoded by this gene is a splicing factor that has been found to be essential during the second catalytic step in the pre-mRNA splicing process. It associates with the spliceosome and contains a zinc knuckle motif that is found in other splicing factors and is involved in protein-nucleic acid and protein-protein interactions. [provided by RefSeq, Jul 2008] |
| Synonyms:             | 9G8; hSlu7; MGC9280  |



[View online »](#)

## Product images:



Western blot analysis of extracts of various cell lines, using SLU7 antibody (TA381735) at 1:1000 dilution. | Secondary antibody: HRP Goat Anti-Rabbit IgG (H+L) at 1:10000 dilution. | Lysates/proteins: 25ug per lane. | Blocking buffer: 3% nonfat dry milk in TBST. | Detection: ECL Basic Kit . | Exposure time: 30s.