

## Product datasheet for **TA381734S**

### SLTM Rabbit Polyclonal Antibody

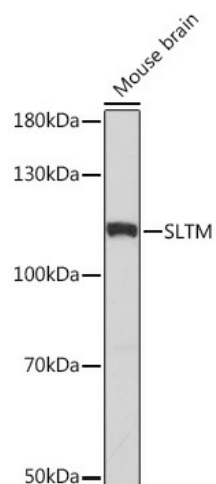
#### Product data:

Product Type:	Primary Antibodies
Applications:	ELISA, WB
Recommended Dilution:	WB, 1:500 - 1:2000 ELISA, Recommended starting concentration is 1 µg/mL. Please optimize the concentration based on your specific assay requirements.
Reactivity:	Mouse
Host:	Rabbit
Isotype:	IgG
Clonality:	Polyclonal
Formulation:	Buffer: PBS with 0.02% sodium azide, 50% glycerol, pH 7.3.
Concentration:	lot specific
Purification:	Affinity purification
Conjugation:	Unconjugated
Storage:	Store at -20°C. Avoid freeze / thaw cycles.
Stability:	Shelf life: one year from despatch.
Predicted Protein Size:	117kDa
Gene Name:	SAFB like transcription modulator
Database Link:	<a href="#">Q9NWH9</a>
Background:	Enables RNA binding activity. Predicted to be involved in regulation of mRNA processing and regulation of transcription by RNA polymerase II. Located in nuclear body.
Synonyms:	DKFZp762G052; FLJ10005; FLJ13213; Met



[View online »](#)

## Product images:



Western blot analysis of lysates from Mouse brain