

Product datasheet for **TA381730S**

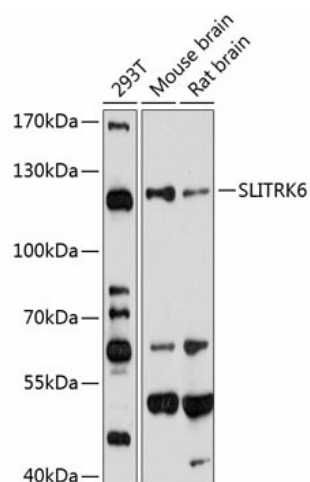
SLITRK6 Rabbit Polyclonal Antibody

Product data:

Product Type:	Primary Antibodies
Applications:	ELISA, WB
Recommended Dilution:	WB, 1:500 - 1:2000 ELISA, Recommended starting concentration is 1 µg/mL. Please optimize the concentration based on your specific assay requirements.
Reactivity:	Human, Mouse, Rat
Modifications:	Unmodified
Host:	Rabbit
Isotype:	IgG
Clonality:	Polyclonal
Formulation:	Buffer: PBS with 0.02% sodium azide, 50% glycerol, pH 7.3.
Concentration:	lot specific
Purification:	Affinity purification
Conjugation:	Unconjugated
Storage:	Store at -20°C. Avoid freeze / thaw cycles.
Stability:	Shelf life: one year from despatch.
Predicted Protein Size:	95kDa
Gene Name:	SLIT and NTRK like family member 6
Database Link:	Entrez Gene 84189 Human Q9H5Y7
Background:	This gene encodes a member of the SLITRK protein family. Members of this family are integral membrane proteins that are characterized by two N-terminal leucine-rich repeat (LRR) domains and a C-terminal region that shares homology with trk neurotrophin receptors. This protein functions as a regulator of neurite outgrowth required for normal hearing and vision. Mutations in this gene are a cause of myopia and deafness.
Synonyms:	4832410J21Rik; FLJ22774; MGC119595; MGC119596; MGC119597



[View online »](#)

Product images:

Western blot analysis of various lysates using SLITRK6 Rabbit pAb (TA381730S) at 1:1000 dilution.

Secondary antibody: HRP-conjugated Goat anti-Rabbit IgG (H+L) (AS014) at 1:10000 dilution.

Lysates/proteins: 25µg per lane.

Blocking buffer: 3% nonfat dry milk in TBST.

Detection: ECL Basic Kit (RM00020).

Exposure time: 60s.